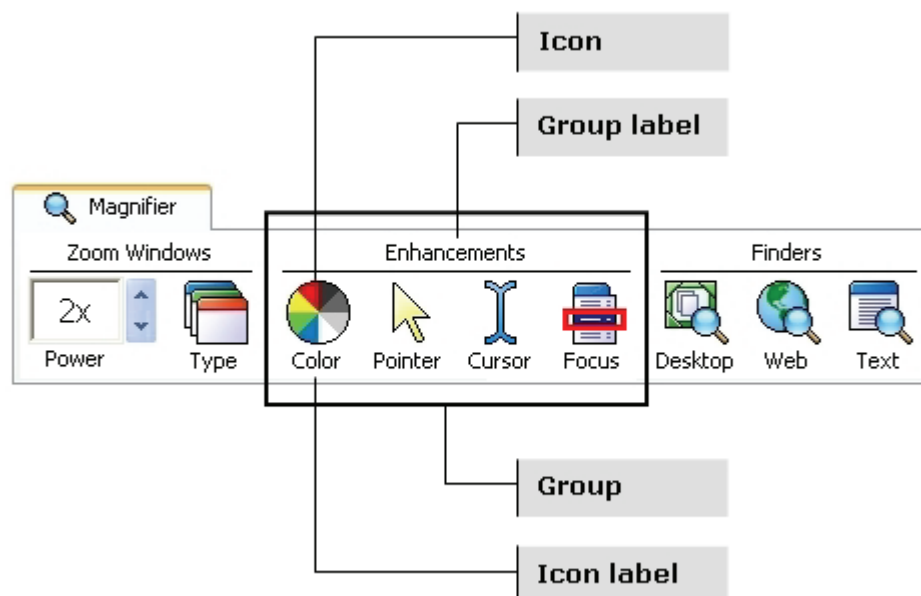


Magnification Features

This chapter describes ZoomText's magnification features. These features are included in ZoomText *Magnifier* and ZoomText *Magnifier/Reader*.

The Magnifier Toolbar

The Magnifier toolbar provides quick access to ZoomText's magnification features. Each toolbar button has an intuitive icon and label for easy identification. Many of these buttons have pop-up menus that provide fast access to the most important and frequently used settings. Related buttons are grouped together and the group is labeled with a clickable link that opens their associated dialog box.





Power Sets the magnification level from 1x to 36x.



Type Sets the zoom window type: Full, Overlay, Lens, Line or one of four Docked types. Each of these windows offers a unique way of viewing what is on the screen, accommodating different tasks and application environments.



Color Selects color enhancement settings. Color enhancements improve screen clarity for easier viewing and reduced eyestrain. You can choose from a variety of preset color schemes or configure your own custom color settings.



Pointer Selects mouse pointer enhancement settings. Pointer enhancements make it easy to locate and follow the mouse pointer. You can choose from a variety of preset pointer enhancement schemes or configure your own custom pointer enhancements.



Cursor Selects cursor enhancement settings. Cursor enhancements make it easy to locate and follow the text cursor. You can choose from a variety of preset cursor enhancement schemes or configure your own custom cursor enhancements.



Focus Selects focus enhancement settings. Focus enhancements make it easy to locate and follow the control focus when you tab and arrow key through menus, dialogs and other application controls. You can choose from a variety of preset focus enhancement schemes or configure your own custom focus enhancements.



Desktop

Desktop Activates the Desktop Finder. The Desktop Finder helps you find and launch programs on the desktop, system tray and quick launch bar. In addition, the Desktop Finder also helps you find and open items in the Control Panel, Programs menu and My Documents folder.



Web

Web Activates the Web Finder. The Web Finder helps you find links and controls in any web page.



Text

Text Activates the Text Finder. The Text Finder helps you locate words or phrases within the active application window or anywhere on the entire screen.

Setting the Magnification Level

ZoomText provides a wide range of magnification levels, allowing you to enlarge the view according to your needs. Magnification levels include: 1x to 8x in steps of 1, 10x to 16x in steps of 2, 20x to 36x in steps of 4, and fractional powers of 1.25x, 1.5x, 1.75x and 2.5x.

► To adjust the magnification level



On the **Magnifier** toolbar, adjust the level in the **Power** spinbox.

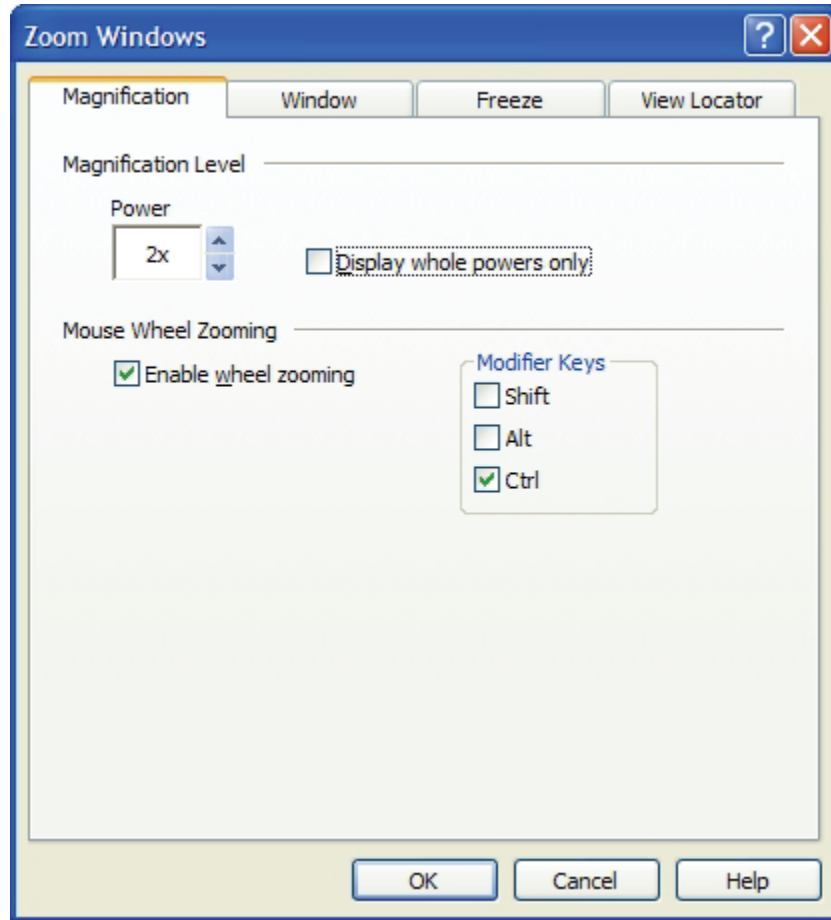
Hotkeys: Increase Magnification:
ALT + NUMPAD PLUS
Decrease Magnification:
ALT + NUMPAD MINUS

The magnification level can also be adjusted in the Zoom Windows dialog, as follows:

1. In the **Magnifier** menu, choose **Magnification...**

The Zoom Windows dialog appears with the Magnification tab displayed.

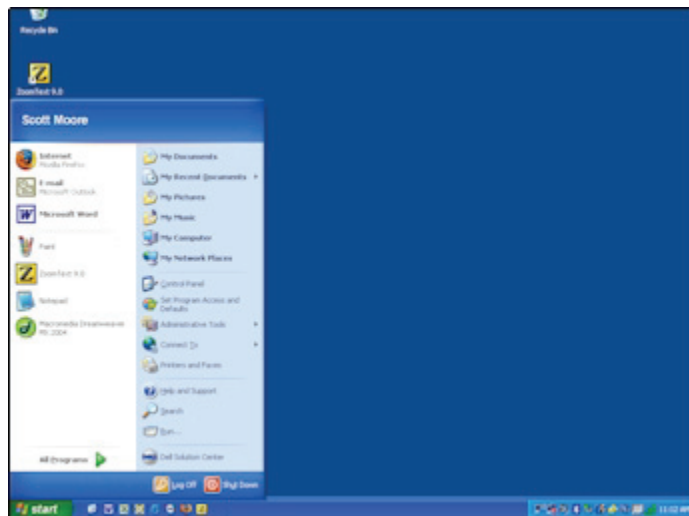
2. Adjust the level in the **Power** spinbox.
3. Click the **OK** button.



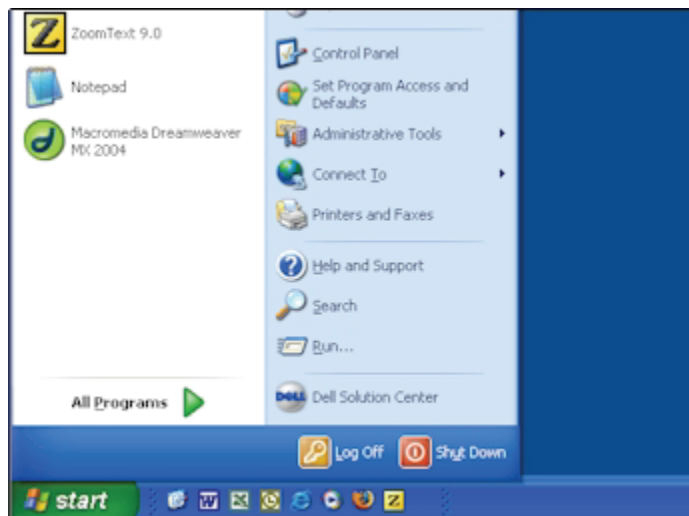
Magnification tab

The following table describes the Magnification Level settings.

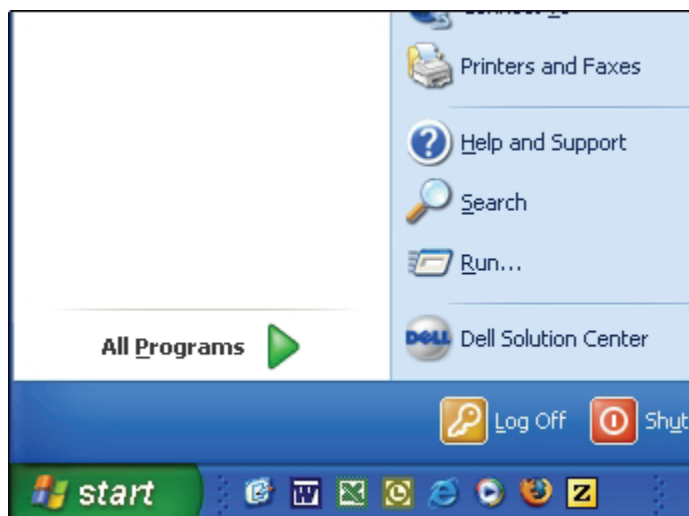
Setting	Description
Power	Sets the magnification level. Magnification levels include: 1x to 8x in steps of 1, 10x to 16x in steps of 2, 20x to 36x in steps of 4, and fractional powers of 1.25x, 1.5x, 1.75x and 2.5x.
<u>D</u> isplay whole powers only	Excludes fractional magnification levels from the Power spinbox.



1x View (normal screen)



2x View



3x View

Mouse Wheel Zooming

If your mouse has a wheel, it can be used to zoom-in and zoom-out over the mouse pointer position. Turning the wheel away from you will increase magnification, while turning the wheel towards you will decrease it.

Since the mouse wheel is used to scroll documents in some programs, ZoomText uses a modifier key to share the wheel with other programs. By default the modifier key is **CTRL**, which means that you must hold down the **CTRL** key while turning the wheel. Turning the wheel without the modifier key will allow the mouse wheel to perform its normal function.

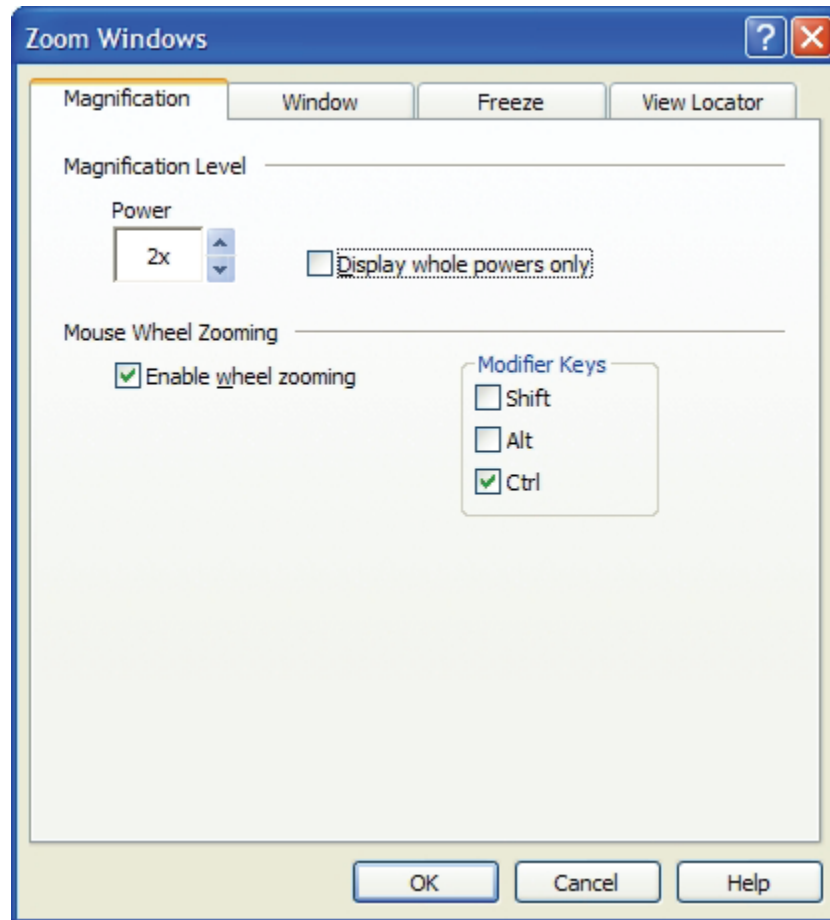
You can turn off all modifier keys allowing ZoomText to use the mouse wheel without a key, but if you do so the normal mouse wheel functions will no longer operate in other applications.

► To enable and configure mouse wheel zooming

1. In the **Magnifier** menu, choose **Magnification...**

The Zoom Window dialog appears with the Magnification tab displayed.

2. Make sure the **Enable wheel zooming** box is checked.
3. Select the modifier key (or keys) that must be pressed in order for the mouse wheel to be used for zooming.
4. Click the **OK** button.



Magnification tab

The following table describes the Mouse Wheel Zooming settings.

Setting	Description
Enable <u>w</u> heel zooming	Enables use of the mouse wheel to change the magnification level.
Modifier Keys	Selects the key combination to be used for mouse wheel zooming. The selected keys must be held down while rotating the mouse wheel in order to change the magnification level.

Zoom Windows

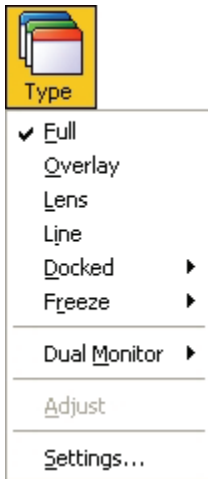
A zoom window displays a magnified view of the computer screen. You can think of a zoom window as a magnifying glass held in front of the screen. A zoom window can only display a portion of the screen at any one time, but by scrolling its magnified contents, any area of the screen can be viewed.

ZoomText provides eight zoom window types: Full, Overlay, Lens, Line and four Docked positions. Each of these windows offer a unique way of viewing what is on the screen. At any time, you can switch zoom window types to accommodate a different task or application environment.

Selecting a Zoom Window

You can select a different zoom window at any time while ZoomText is active.

► To select a zoom window



On the **Magnifier** toolbar, select **Type**, and then select the desired zoom window.

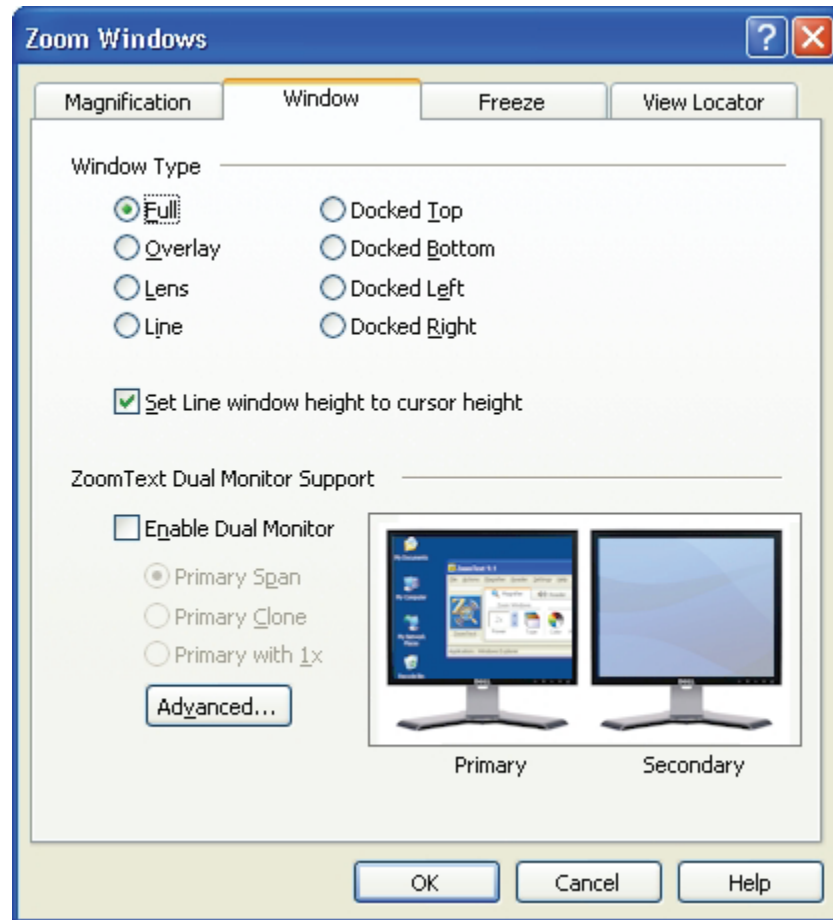
Hotkey: **CTRL + SHIFT + Z**
Cycles through the zoom window types.

A zoom window type can also be selected in the Zoom Windows dialog, as follows:

1. In the **Magnifier** menu, choose **Zoom Window...**

The Zoom Windows dialog appears with the Window tab displayed.

2. Select the desired zoom window type.
3. Click the **OK** button.



Window tab

The following table describes the Window Type settings.

Setting	Description
<u>F</u> ull	Displays a zoom window that occupies the entire screen.
<u>O</u> verlay	Displays a zoom window that lies on top of the normal screen and can be sized and moved to occupy any area.
<u>L</u> ens	Displays a zoom window that moves over the normal screen like a magnifying glass, displaying what is directly beneath it. The lens automatically follows as you move the mouse pointer, type text and navigate through your programs.
<u>L</u> ine	Displays a zoom window that moves up and down the screen like a magnifying ruler, displaying what is directly beneath it. The line automatically follows as you move the mouse pointer, type text and navigate through your programs.
Docked <u>T</u> op	Displays a zoom window that occupies the top half of the screen. The height of the zoom window can be adjusted to occupy a larger or smaller portion of the screen.

(Continued)

Docked <u>B</u> ottom	Displays a zoom window that occupies the bottom half of the screen. The height of the zoom window can be adjusted to occupy a larger or smaller portion of the screen.
Docked <u>L</u> eft	Displays a zoom window that occupies the left side of the screen. The width of the zoom window can be adjusted to occupy a larger or smaller portion of the screen.
Docked <u>R</u> ight	Displays a zoom window that occupies the right half of the screen. The width of the zoom window can be adjusted to occupy a larger or smaller portion of the screen.
<u>S</u> et Line window height to cursor height	As the text cursor moves through larger or smaller text, the height of the Line window increases or decreases, so that only the current line of text is displayed.

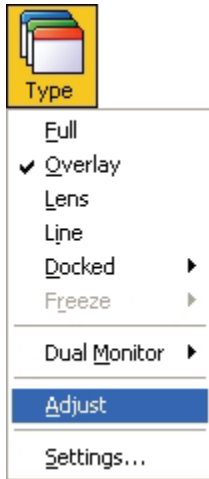
For information on adjusting zoom windows, see "Adjusting a Zoom Window" in this chapter.

Adjusting a Zoom Window

ZoomText's windows can be sized and/or moved to occupy a different portion of the screen (with the exception of Full zoom). The following table outlines the size/move characteristics for each zoom window type.

Window Type	Sizeable	Moveable
Full	no	no
Overlay	yes	yes
Lens	yes	automatic
Line	yes	automatic
Docked	yes	no
Freeze	yes	yes

► To size and move a zoom window



1. On the **Magnifier** toolbar, choose **Type ► Adjust**.

The Adjust tool becomes active and sizing handles appear on the zoom window frame.

Hotkey: **CTRL + SHIFT + A**

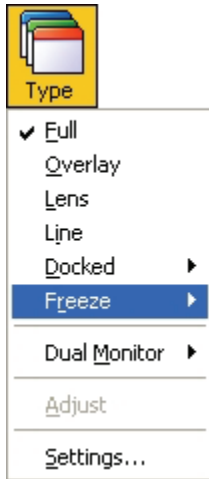
2. To size the window, drag any handle.
3. To move the window, drag inside the window frame.
4. To scroll the contents of the window, hold down **CTRL**, and then drag inside the window frame.
5. To exit the Adjust tool, right-click or press **ESC**.

The Freeze Window

In a magnified view, it is impossible to see the entire screen at once. As a result, you may not be able to view multiple items of interest at the same time, such as information located at opposite edges of the screen. The Freeze window solves this problem by allowing you to monitor a selected area of the screen, while you simultaneously view and work in other areas of the screen. Here's how it works...

Using the Freeze tool, you select an area of the screen that you want to monitor. When you've completed your selection, the Freeze window automatically appears on top of the Full zoom window displaying the selected area. The Full zoom window continues to operate normally, tracking all on-screen activity and allowing you to navigate and work in all areas of the screen.

► To set up a Freeze window



1. Set the zoom window type to **Full**.
2. On the **Magnifier** toolbar, select **Type ► Freeze ► New**.

The Freeze tool becomes active.

Hotkey: **CTRL + SHIFT + N**

3. Move the mouse pointer until the area you want to freeze is scrolled into view.
4. Hold down the left button, drag to selection rectangle around the desired freeze area and release the button.

When you complete the drag, the Freeze window will appear with sizing handles on the frame.

5. To size the window, drag any handle. To move the window, drag inside the window frame. To scroll the contents of the window, hold down **CTRL** and drag inside the window frame.
6. To exit the Freeze tool, right click or press **ESC**.

Note: The Freeze window can be resized or moved using the Adjust tool.

► To enable and disable the Freeze window

On the **Magnifier** toolbar, choose **Type ► Freeze ► Enable** (or **Type ► Freeze ► Disable**).

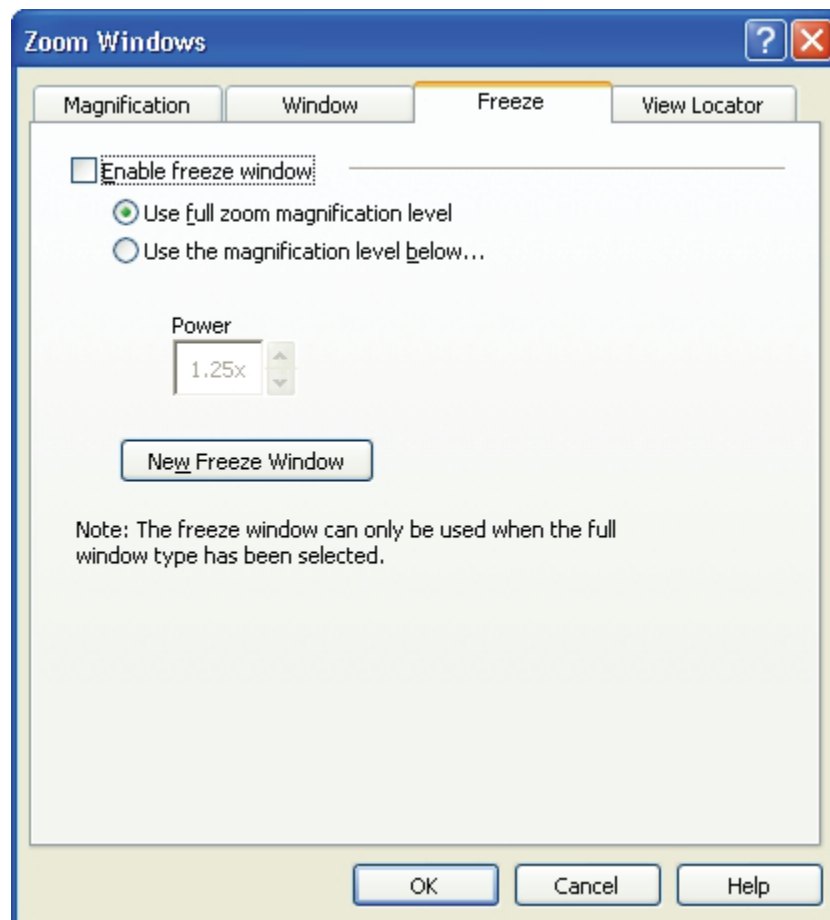
Hotkey: **CTRL + SHIFT + E**

► To adjust the Freeze window options

1. In the **Magnifier** menu, choose **Freeze Window...**

The Zoom Windows dialog appears with the Freeze tab displayed.

2. Adjust the freeze window options as desired.
3. Click the **OK** button.



Freeze tab

The following table describes the Freeze window settings.

Setting	Description
<u>E</u> nable freeze window	Enables the Freeze window (when the zoom window type is set to Full).
Use <u>f</u> ull zoom magnification level	Sets the Freeze window to use the same magnification level as the Full zoom window.
Use the magnification level <u>b</u> elow	Allows the Freeze window to use its own magnification level (set using the Power spinbox).
Power	Sets the Freeze window's magnification level. Magnification levels include: 1x to 8x in steps of 1, 10x to 16x in steps of 2, 20x to 36x in steps of 4x, and fractional powers of 1.25x, 1.5x, 1.75x and 2.5x.
<u>N</u> ew Freeze Window	Activates the Freeze Tool.

Using View Mode and the View Locator

View mode shows you the area of the screen that is currently being magnified and allows you to select a new area to zoom in on. When view mode is activated, magnification turns off and the view locator appears in the normal screen. By moving the view locator, you can select a new area to zoom in on.

► To use View Mode

1. In the **A**ctions menu, choose **V**iew Mode.

Magnification is temporarily turned off and the view locator appears.

Hotkey: **CTRL + SHIFT + V**

2. Move the view locator to the desired screen location.
3. Click to zoom-in on the new location.

Magnification is restored with the selected screen area displayed.

You can configure the view locator to appear in a variety of shapes and colors. The view locator can also be enabled to appear in normal (unmagnified) portions of the screen when using Overlay or Docked zoom windows.

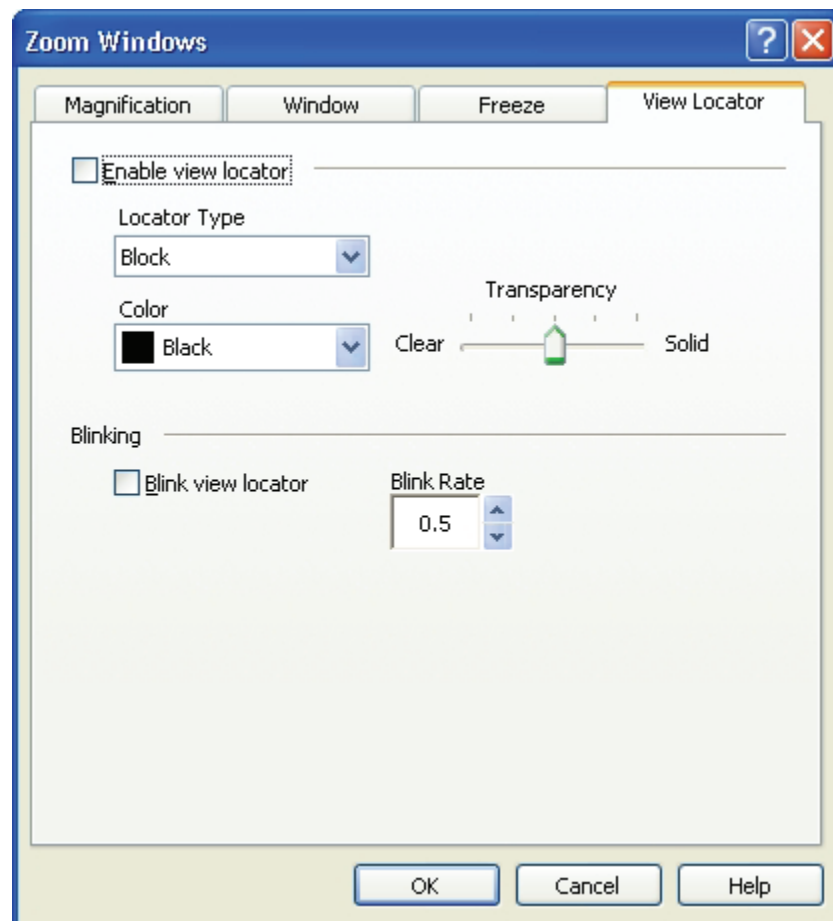
► **To enable and configure the view locator**

1. In the **Magnifier** menu, choose **View Locator...**

The Zoom Window dialog appears with the View Locator tab displayed.

2. Make sure the **Enable view locator** box is checked.
3. Adjust the locator options as desired.
4. Click the **OK** button.

Note: The view locator can be enabled and disabled using the Locator command: **CTRL + SHIFT + L**.



View Locator tab

The following table describes the View Locator settings.

Setting	Description
<u>E</u> nable view locator	Enables the display of the view locator.
Locator Type	Selects the type of view locator that is displayed: Block, Inverted Block, Frame or Cross.
Color	Selects the color that the view locator will appear in.
Transparency	Sets the level of transparency for the view locator. The transparency level controls the amount of the desktop image that is visible through the view locator.
<u>B</u> link view locator	Turns locator blinking on or off.
Blink Rate	Sets the blink rate for the view locator in seconds (from .5 to 5, in increments of .5).

Dual Monitor Support

When using a computer equipped with two monitors, ZoomText's Dual Monitor Support allows you to use the primary and secondary monitors to double the width of the magnified view (Primary Span), duplicate the magnified view (Primary Clone), or simultaneously see a magnified and unmagnified view of the screen (Primary with 1x). ZoomText's dual monitor views are designed to enhance productivity and comfort for individual users (working alone) or a group of users (low vision and normal sighted) that are working together on the same system.



Primary Span

Primary Span extends ZoomText's magnified view across the primary and secondary monitors, doubling the amount of information that can be seen at any time. With twice as much information in view you can work with greater speed and comfort than is possible when using a single monitor.



Primary Clone

Primary Clone displays the same magnified view on your primary and secondary monitors. This mode is useful when two or more users need to see the same magnified view, but are not seated so that they can share a single monitor.



Primary with 1x

Primary with 1x displays a magnified view on your primary monitor and an unmagnified view on your secondary monitor. This mode is useful when a low-vision user and normal-sighted user are working together on the same system. The low-vision user can zoom-in to the desired level (on the primary monitor) while the normal-sighted user sees the unmagnified view on the secondary monitor.

Dual Monitor System Requirements

To use ZoomText's Dual Monitor Support your system must have the following hardware and software:

- Windows Vista or Windows XP
- A desktop or laptop computer with a dual-head video card or two video cards
- Two computer monitors (any combination of CRT or LCD)

Note: For best viewing in Primary Span view, we recommend using a matched set of LCD monitors (size wise) that are positioned immediately side by side. This configuration provides a magnified view that's seamless and aligned.

Required Display Settings

In addition to the system requirements for using ZoomText's dual monitor feature, the Windows display settings for your primary and secondary monitors must be configured as follows:

- The extended desktop option must be enabled.
- The screen resolution and color quality must be set to equal values.
- The physical arrangement of your primary and secondary monitors must be horizontally aligned.

In Windows XP, ZoomText will automatically adjust these settings for you when you enable the dual monitor feature. In Windows Vista you must manually enable the extended desktop, as follows:

1. Select **Start ► Control Panel ► Appearance and Personalization ► Adjust Screen Resolution**.

The Display Properties dialog appears.

2. Select the **Settings** tab.
3. Click on the box labeled '2', then click **Extend my Windows desktop onto this monitor**.
4. Click the **OK** button.

Using ZoomText's Dual Monitor Support

The first time you start ZoomText, it will automatically detect the presence of two monitors on your system and ask if you want to enable the dual monitor feature. If you choose 'Yes', ZoomText will enable the dual monitor feature in Primary Span view (default). However, you can enable and disable the dual monitor feature or select a different dual monitor view at any time.

► To enable and disable the dual monitor feature

- On the Magnifier toolbar, select **Type ► Dual Monitor ► Enable (or Disable)**.

Hotkey: **WINDOWS + SHIFT + D**

► To select a dual monitor view

- On the Magnifier toolbar, select **Type ► Dual Monitor**, and then select the desired dual monitor view – Primary Span, Primary Clone, or Primary with 1x.

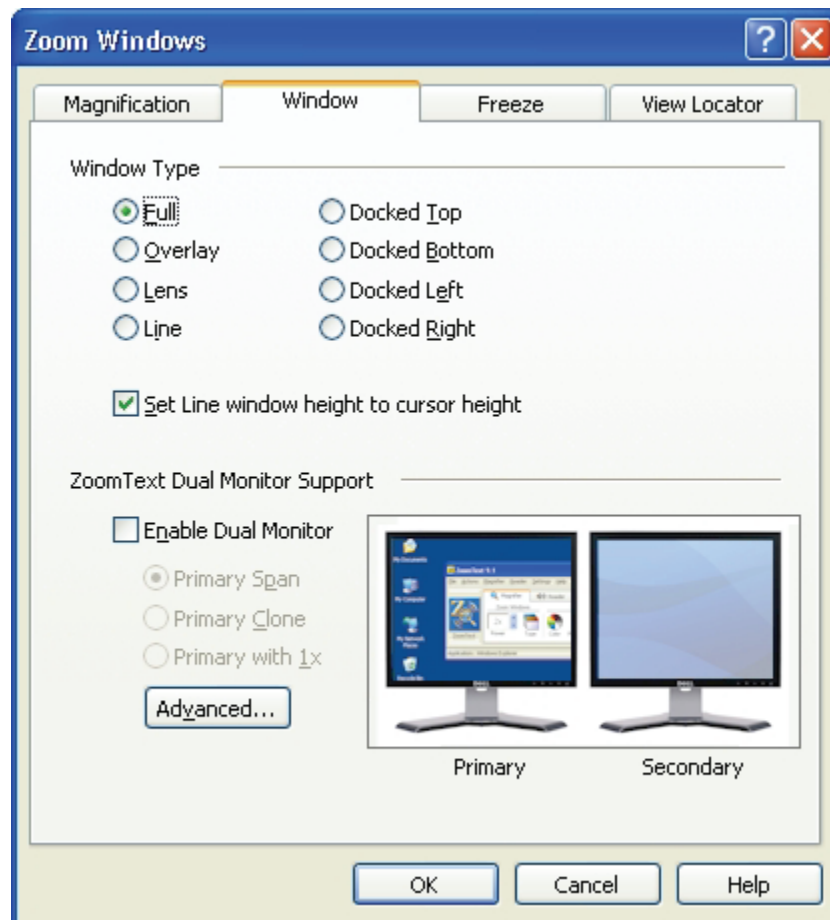
Hotkey: **WINDOWS + SHIFT + Z**
Cycle through the dual monitor views.

A dual monitor view can also be selected in the Zoom Windows dialog, as follows:

1. In the **Magnifier** menu, choose **Zoom Windows...**

The Zoom Windows dialog appears with the Window tab displayed.

2. Adjust the dual monitor options as desired.
3. Click the **OK** button.



Window tab

The following table describes the Dual Monitor Support settings.

Setting	Description
Enable Dual Monitor	<p>Enables ZoomText's dual monitor support.</p> <p>Note: When you enable Dual Monitor Support any applications located on the extended desktop are moved to the primary desktop.</p> <p>When you disable Dual Monitor Support your extended desktop is re-enabled. Applications can then be moved back onto the extended desktop.</p>
Primary Span	<p>Primary Span displays a Full magnified view of your primary desktop that spans across the primary and secondary monitors. This mode doubles the width of your magnified view. With twice as much area in view scrolling is reduced and productivity is increased.</p>

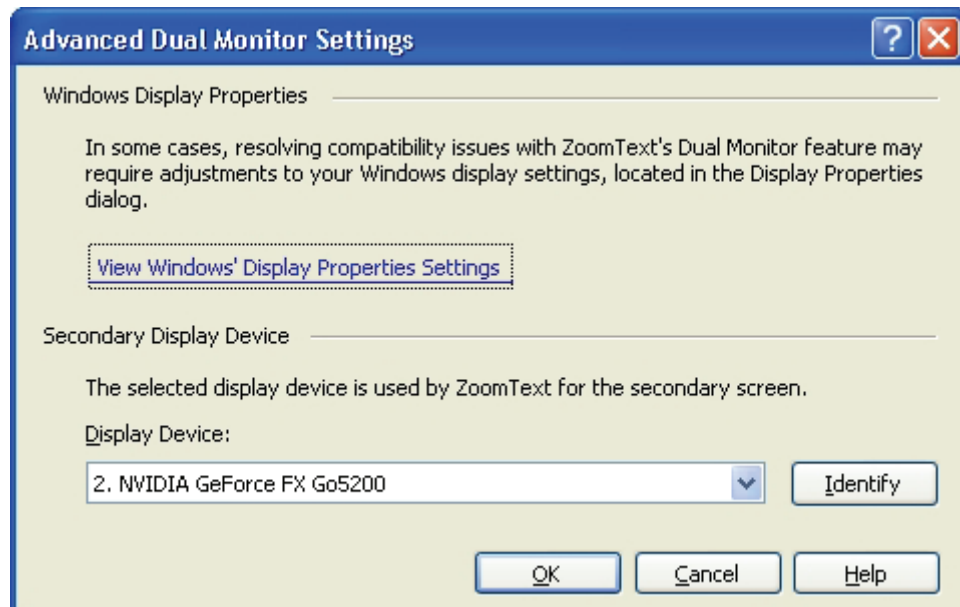
(Continued)

Primary <u>C</u> lone	Primary Clone displays a magnified view of your primary desktop on both the primary and secondary monitors. This mode is useful when two or more users need to see the same magnified view, but are not seated so that they can share a single monitor.
Primary with <u>1</u> x	Primary with 1x displays a magnified view of your primary desktop on the primary monitor and a 1x view of your primary desktop on your secondary monitor. This mode is useful when a low-vision user and normal-sighted user are working together on the same system. The low-vision user can zoom-in and out as needed on the magnified screen while the normal-sighted user views the unmagnified (1x) screen.
Adv <u>a</u> nced	Displays settings for identifying and selecting a secondary display device and allows you to open and adjust settings in the Windows Display Properties dialog (sometimes used to resolve compatibility issues).

Advanced Dual Monitor Settings

ZoomText's Advanced Dual Monitor Settings allow you to select a display device to use for your secondary screen (on systems configured with three or more display devices), and provides quick access to the Windows display properties settings.

- **To access the Advanced Dual Monitor Settings**
 - In the Window tab of the Zoom Windows dialog, select **Advanced**.



Advanced Dual Monitor Settings dialog

The following table describes the Advanced Dual Monitor Settings.

Setting	Description
View Windows' Display Properties Settings	Opens the Windows Display Properties Settings dialog box.
<u>D</u> isplay Device	Displays a list of display devices that can be used by ZoomText for the secondary monitor.
<u>I</u> dentify	Identifies the secondary monitors on your system. On systems configured with two monitors, a large 'Z' is displayed on the secondary monitor. On systems configured with three or more monitors, an identifying number appears on each of the secondary monitors (e.g. 1, 2, 3).

Using ZoomText with Dual Monitors Disabled

When ZoomText's dual monitor support is disabled, ZoomText will magnify and speak applications and documents located on the primary desktop. You can move application windows onto the secondary desktop, but they will not be magnified or spoken.

Primary Monitor and Physical Arrangement

On a system configured with multiple monitors, Windows provides settings that allow you to select which monitor will be the primary monitor (that is where your Windows taskbar appears), and to tell Windows how your monitors are physically arranged in your workspace.

More about selection of the primary monitor

On a system configured with multiple monitors, Windows numbers each monitor device, as displayed in the Settings tab of the Display Properties dialog. By default, monitor 1 is configured as the primary display with monitor 2 configured as the secondary display, and so on.

Although Windows normally sets monitor 1 as the primary display, on some systems you can select another numbered monitor to operate as the primary monitor. Whichever monitor you select as your primary monitor, ZoomText will use that monitor for its primary display.

More about physical arrangement of multiple monitors

By arranging the monitors in the Display Properties dialog as they are physically arranged on your desktop, Windows can properly configure the extended desktop so that you can intuitively move the mouse and application windows directly across from one monitor to another, as if it were one seamless screen.

When using ZoomText's Dual Monitor feature in Span View, it is important that your monitors are properly arranged in the Display Properties dialog, so that the two magnified screens line up to provide a seamless magnified view.

Using the Dual Monitor Feature with Three or More Monitors

When activating ZoomText's dual monitor feature on a system configured with three or more monitors, the following will occur:

- All application windows that are located on the secondary displays (monitor devices 2 and greater) will be moved to the primary screen.
- ZoomText will utilize the primary display and the secondary display selected in ZoomText's advanced dual monitor settings. To access the advanced settings, from the ZoomText menu bar, choose **Magnifier ► Zoom Windows... ► Advanced** (button).
- Additional display devices will display the Windows desktop wallpaper, but they cannot be accessed and used. That is, you cannot move the mouse or application windows into these areas.

Dual Monitor Troubleshooting

This Help topic's provides information for troubleshooting problems that can occur when using ZoomText's dual monitor feature.

ZoomText asked "Do you see a yellow 'Z' on your secondary monitor", but I did not see the 'Z'.

This problem can occur for the following reasons:

- You have a second monitor, but it is not properly attached to your computer, not connected to a power source, or not switched on. Check the connections for your second monitor and make sure it is switched on.
- Your system is configured with a video card (or cards) that support a secondary monitor, but you do not have a second monitor on your workstation. Attach a second monitor to your system or do not attempt to enable the dual monitor feature.

ZoomText asked "Do you see a yellow 'Z' on your secondary monitor". I saw the yellow 'Z' but when I clicked the 'Yes' button ZoomText displayed a message saying "ZoomText was unable to activate the dual monitor feature..."

This problem occurs for the following reason:

- ZoomText was unable to adjust the primary and secondary display settings so that they have matching screen resolutions and color quality. Note: Matched settings are required. You must manually adjust these settings so that they have matched values.

To adjust the screen resolutions and color quality for your primary and secondary monitors:

1. In Windows Vista:

Select **Start ► Control Panel ► Appearance and Personalization ► Adjust Screen Resolution**.

In Windows XP:

Select **Start ► Control Panel ► Display ► Settings** (tab).

The Windows display settings appear.

2. Click on the display box labeled '1' (or the number that represents your primary monitor), and then select the desired Screen Resolution and Color Quality.
3. Click on the display box labeled '2' (or the number that represents your secondary monitor), and then select the same Screen Resolution and Color Quality that you chose for '1'. If you cannot select equal values, repeat steps 3 and 4 choosing a lower resolution or color quality.
4. Click the **OK** button.

ZoomText asked "Please select the number displayed on your secondary monitor", but you didn't see a number on the monitor you want to use.

This problem can occur for the following reasons:

- You have a second monitor, but it is not properly attached to your computer, not connected to a power source, or not switched on. Check the connections for your second monitor and make sure it is switched on.
- Your system is configured with a video card (or cards) that support a secondary monitor, but you do not have a second monitor on your workstation. Attach a second monitor to your system or do not attempt to enable the dual monitor feature.

Note: This problem can only occur on systems that are configured with three or more display devices.

In Windows Vista, ZoomText informs you that "The desktop must be manually extended in order to utilize the dual monitor feature. Extend the desktop and restart ZoomText."

To enable the extended desktop in Windows Vista:

1. Select **Start ► Control Panel ► Appearance and Personalization ► Adjust Screen Resolution**.

The display settings appear.

2. Click on the box labeled '2' (or the number that represents your secondary monitor), and then click **Extend my desktop onto this monitor**.
3. Click the **OK** button.

Your system has three (or more) monitors and when the ZoomText dual monitor feature is enabled you cannot move the mouse pointer into the third monitor.

This is normal behavior. ZoomText's dual monitor feature only supports two monitors. When ZoomText's dual monitor feature is enabled the third monitor cannot be accessed.

Your system has three (or more) monitors and when you attempted to activate ZoomText's dual monitor feature, ZoomText displayed a message saying "ZoomText was unable to activate the dual monitor feature..."

This error will occur if you have three or more active monitors and the primary monitor and selected secondary monitor are not positioned adjacently in the Display Properties dialog. To correct this problem, you must reposition the monitors as follows:

1. In Windows Vista:

Select **Start ► Control Panel ► Appearance and Personalization ► Adjust Screen Resolution**.

In Windows XP:

Select **Start ► Control Panel ► Display ► Settings** (tab).

The Windows display settings appear.

2. Drag the numbered box that represents your secondary monitor so that it is positioned next to the primary monitor.
3. Click the **OK** button.

When using Span View the left half of the magnified view is on the right and vice versa.

The position of your primary and secondary monitors must be switched in the Display Properties dialog, as follows:

1. In Windows Vista:

Select **Start ► Control Panel ► Appearance and Personalization ► Adjust Screen Resolution**.

In Windows XP:

Select **Start ► Control Panel ► Display ► Settings (tab)**.

The Windows display settings appear.

2. Switch the positions of the boxes representing your primary and secondary monitors.
3. Click the **OK** button.

ZoomText only magnifies and scrolls across half of the desktop area.

This problem can occur for the following reasons:

- ZoomText's dual monitor feature is enabled and you are only looking at one of your monitors. The other half of the desktop area is displayed on the second monitor.
- ZoomText detected support for two monitors on your system and although you do not have a second monitor, you chose to enable the dual monitor support.
- You chose to activate dual monitor support while you had two monitors attached to your system, but you are now running your system with only one monitor. Note: ZoomText is not able to detect that the second monitor is no longer present.

To disable ZoomText's dual monitor support:

- On the Magnifier toolbar, select **Type ► Dual Monitor ► Disable**.

You can also disable ZoomText's dual monitor feature using the Dual Monitor On/Off hotkey: **WINDOWS + SHIFT + D**.

Screen Enhancements

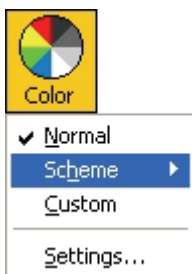
Screen enhancements improve the legibility of the screen. With these settings you can:

- Adjust screen colors for improved contrast and clarity.
- Modify the mouse pointer and text cursor, making them easier to see and follow.
- Apply focus enhancements, making it easy to see and follow the control focus.
- Apply font enhancements for sharp print-quality text that's easy to read at all magnification levels.

Color Enhancements

Color enhancements improve clarity of text and graphics, providing easier viewing and reduced eyestrain. The color enhancement options consist of a variety of filter effects that adjust color, contrast and brightness. You can choose from preset color schemes or configure your own custom color settings.

► To choose a preset color scheme



On the **Magnifier** toolbar, select **Color ► Scheme**, and then select the desired color scheme.

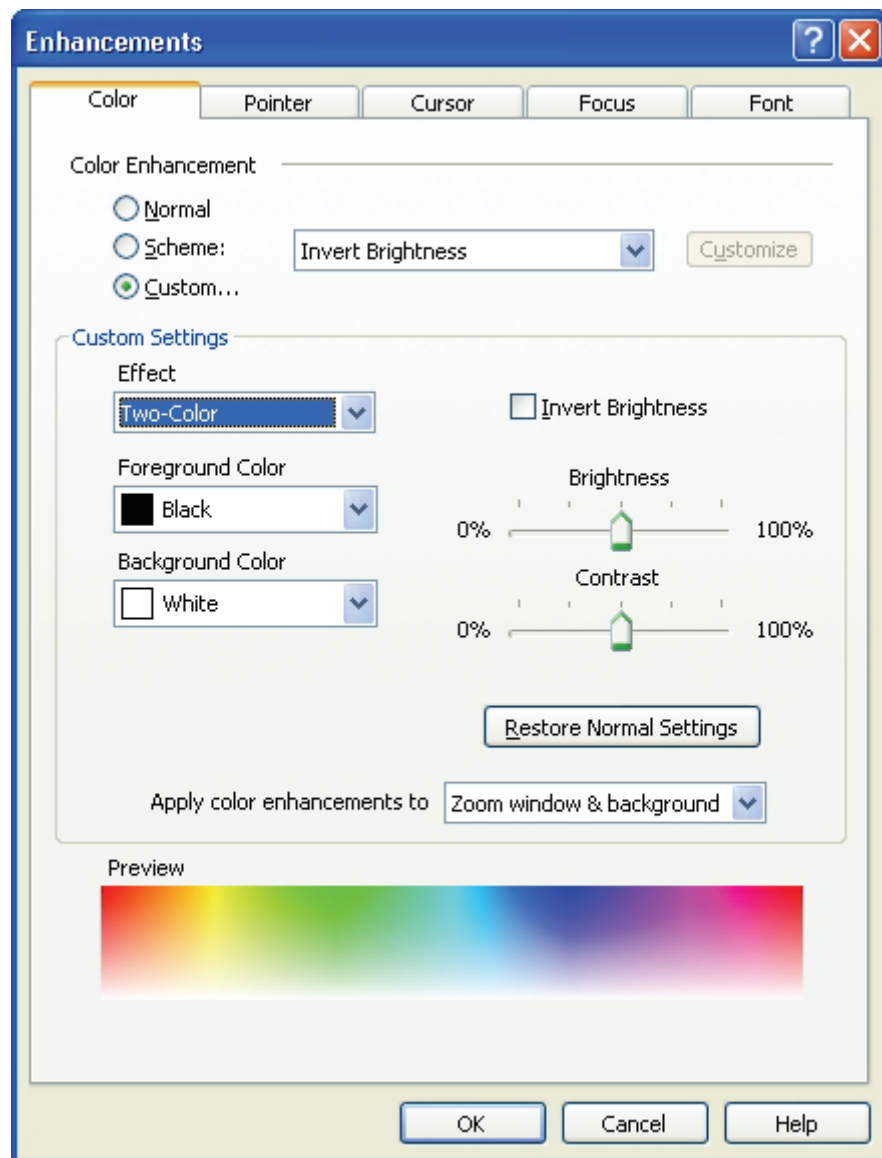
Note: You can turn color enhancements on and off using the Color Enhancements On/Off hotkey: **CTRL + SHIFT + C**.

► **To configure custom color settings**

1. In the **Magnifier** menu, choose **C_color Enhancements...**

The Enhancements dialog appears with the Color tab displayed.

2. Select **C_custom...**
3. Adjust the custom settings as desired.
4. Click the **OK** button.



Color tab

The following table describes the Color Enhancement settings.

Setting	Description
<u>N</u> ormal	Disables all color enhancements.
<u>S</u> cheme:	Activates a preset color scheme (selected in the neighboring combo box).
<u>C</u> ustom...	Activates the Custom Settings , allowing you to create your own custom color scheme.
<u>C</u> ustomize	Activates and configures the Custom Settings to match the selected preset color scheme. This allows you to use a preset scheme as the starting point for a custom scheme.
<u>E</u> ffect	Selects the type of color effect and activates the associated settings. None No filtering is applied. Black and White Converts all screen colors to equivalent shades of gray. Reverse Video Inverts all screen colors.

(Continued)

Dyed Transforms all screen colors to a single hue while preserving their light and dark values. When the Dye effect is selected, a **Color** combo box appears, allowing you to select the dye color.

Two-Color Transforms all screen colors to a two-color spectrum. When the Two-Color effect is selected, **Foreground Color** and **Background Color** combo boxes appear, allowing you to define the two-color spectrum.

Replace Color Replaces one screen color with another. When the Replace Color effect is selected, **Replace** and **With** combo boxes appear, allowing you to choose the color to replace and the replacement color.

Remove Color Removes a selected color from the screen. When the Remove Color effect is selected, a **Color to Remove** combo box appears allowing you to choose the color that you want to remove. A **Bandwidth** slider also appears, allowing you to expand the range of color removal to hues close to the selected color.

(Continued)

<u>I</u> nvert Brightness	Inverts the brightness of all screen colors. Light colors become dark and vice-versa.
Color Level	Adjusts the amount of color saturation on the screen. At 0%, color is completely removed and the screen resembles black and white television. At 100%, colors are intensified. Note: This setting is only available when Effect is set to 'None'.
Bandwidth	Increases the range of color replacement or color removal to include all shades of the selected color. Note: This setting is only available when Effect is set to 'Replace Color' or 'Remove Color'.
Brightness	Increases or decreases the brightness of the screen image from 0% to 100%. Normal brightness is 50%.
Contrast	Increases or decreases the contrast of the screen image from 0% to 100%. Normal contrast is 50%.
<u>R</u> estore Normal Settings	Restores Brightness and Contrast to 50% (normal).

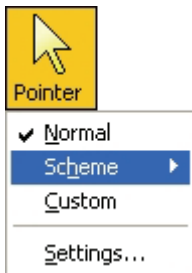
(Continued)

Apply color enhancements to	Determines whether color enhancements are applied to the zoom window, background (normal screen) or both.
Preview	Displays the color spectrum as it will appear with the selected color enhancements.

Pointer Enhancements

Pointer enhancements make it easy to locate and follow the mouse pointer. You can adjust the size and color of the pointer and activate a locator that emphasizes the pointer's position on the screen. You can choose from preset pointer schemes or configure your own custom pointer settings.

► To choose a preset pointer scheme



On the **Magnifier** toolbar, select **Pointer ► Scheme**, and then select the desired pointer scheme.

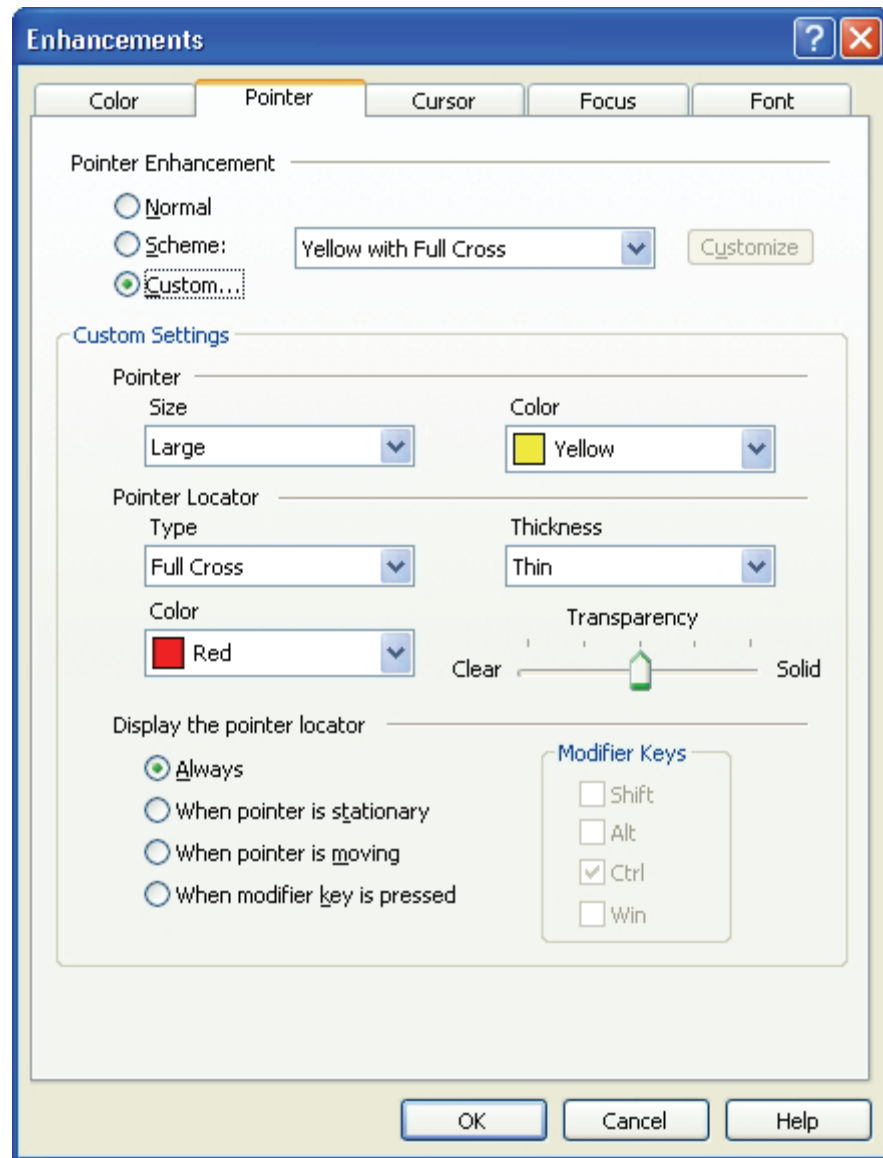
Note: You can turn pointer enhancements on and off using the Pointer Enhancements On/Off hotkey: **CTRL + SHIFT + P**.

► To configure custom pointer settings

1. In the **Magnifier** menu, choose **Pointer Enhancements...**

The Enhancements dialog appears with the Pointer tab displayed.

2. Select **Custom...**
3. Adjust the custom settings as desired.
4. Click the **OK** button.

*Pointer tab*

The following table describes the Pointer Enhancement settings.

Setting	Description
<u>N</u> ormal	Disables all pointer enhancements.
<u>S</u> cheme	Enables a preset pointer scheme (selected in the neighboring combo box).

(Continued)

<u>C</u> ustom...	Activates the Custom Settings , allowing you to create your own custom pointer scheme.
<u>C</u> ustomize	Activates and configures the Custom Settings to match the selected preset pointer scheme. This allows you to use a preset scheme as the starting point for a custom scheme.
Size	Sets the size of the enhanced mouse pointer to standard (1x), large (2x) or extra large (4x) sizes.
Color (pointer)	Sets the color for the mouse pointer.
Type	<p>Selects the type of pointer locator:</p> <p>Circle Displays a circle that is centered over the pointer's hot spot.</p> <p>Sonar Displays animated circles that radiate inward toward the pointer's hot spot.</p> <p>Full Cross Displays a set of crosshairs that extend across the entire zoom window and intersect the pointer's hot spot.</p> <p>Crosshairs Displays a set of crosshairs that are centered over the pointer's hot spot.</p>

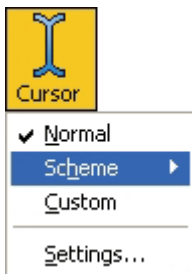
(Continued)

Color (locator)	Sets the color for the pointer locator.
Thickness	Sets the thickness of the pointer locator: Thin, Medium or Thick.
Transparency	Sets the level of transparency for the pointer locator. The transparency level controls the amount of the desktop image that is visible through the pointer locator.
<u>A</u> lways	The pointer locator is always displayed.
When pointer is <u>s</u> tationary	The pointer locator is only displayed when the pointer is stationary (not moving).
When pointer is <u>m</u> oving	The pointer locator is only displayed when the pointer is moving.
When modifier <u>k</u> ey is pressed	The pointer locator is only displayed when the pointer modifier keys are held down.
Modifier Keys	<p>Selects a key or combination of keys that, when pressed, will display the pointer locator.</p> <p>Note: Display the pointer locator must be set to When modifier <u>k</u>ey is pressed.</p>

Cursor Enhancements

Cursor enhancements make it easy to locate and follow the text cursor. A choice of high visibility locators mark the cursor's position, without obscuring the surrounding text. You can choose from preset cursor schemes or configure your own custom cursor settings.

► To choose a preset cursor scheme



On the **Magnifier** toolbar, select **Cursor ► Scheme**, and then select the desired cursor scheme.

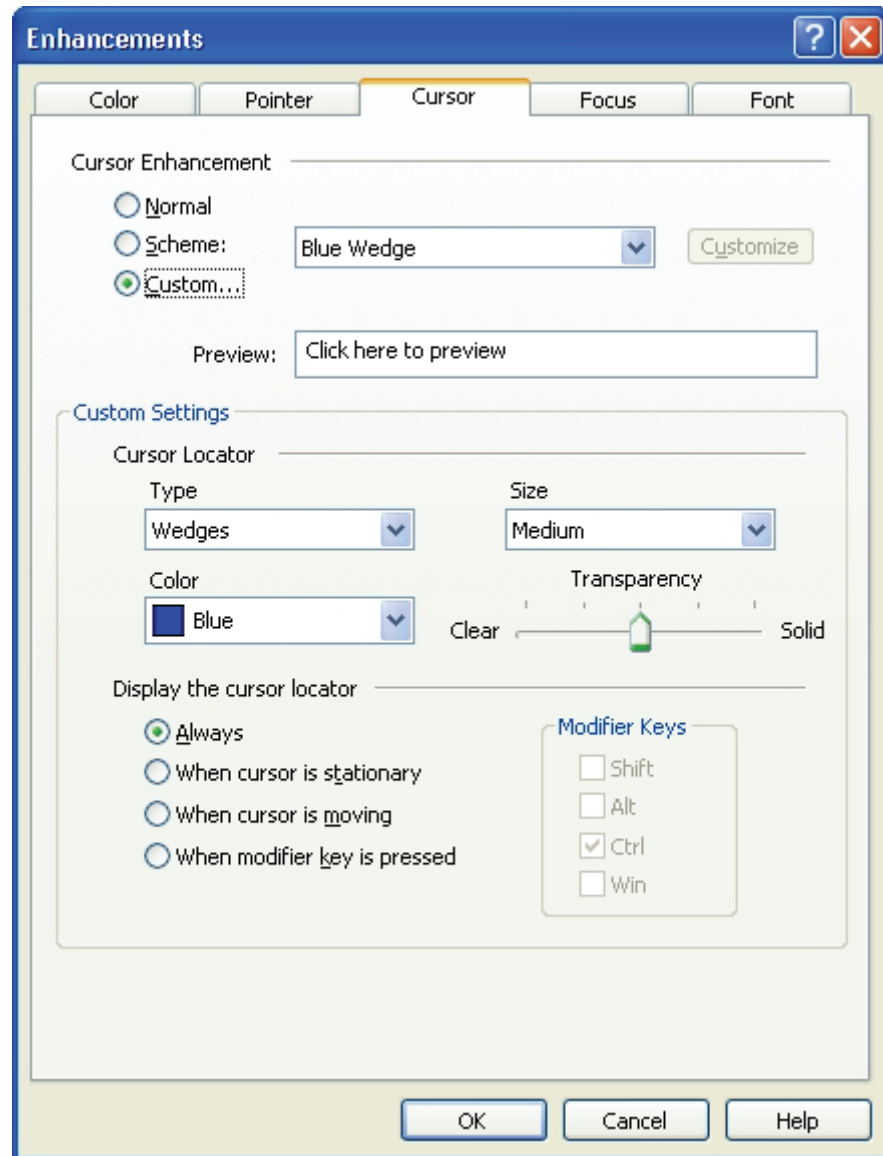
Note: You can turn cursor enhancements on and off using the Cursor Enhancements On/Off hotkey: **CTRL + SHIFT + R**.

► To configure custom cursor settings

1. In the **Magnifier** menu, choose **Cursor Enhancements...**

The Enhancements dialog appears with the Cursor tab displayed.

2. Select **Custom...**
3. Adjust the custom settings as desired.
4. Click the **OK** button.



Cursor tab

The following table describes the Cursor Enhancement settings.

Setting	Description
<u>N</u> ormal	Disables all cursor enhancements.
<u>S</u> cheme	Activates a preset cursor scheme (selected in the neighboring combo box).
<u>C</u> ustom...	Activates the Custom Settings , allowing you to create your own custom cursor scheme.
C <u>u</u> stomize	Activates and configures the Custom Settings to match the selected preset cursor scheme. This allows you to use a preset scheme as the starting point for a custom scheme.
Preview	When you click in the Preview box a text cursor appears with the selected cursor enhancement settings.
Type	Selects the type of cursor locator: Wedges Displays triangular wedges above and below the cursor. Circle Displays a circle around the cursor. Frame Displays a rectangular frame around the cursor.

(Continued)

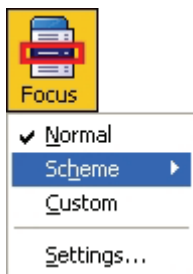
Size	Sets the size of the cursor locator: Thin, Medium or Thick.
Color	Sets the color for the cursor locator.
Transparency	Sets the level of transparency for the cursor locator. The transparency level controls the amount of the desktop image that is visible through the cursor locator.
<u>A</u> lways	The cursor locator is always displayed.
When cursor is <u>s</u> tationary	The cursor locator is only displayed when the cursor is stationary (not moving).
When cursor is <u>m</u> oving	The cursor locator is only displayed when the cursor is moving.
When modifier <u>k</u> ey is pressed	The cursor locator is only displayed when the cursor modifier keys are held down.
Modifier Keys	<p>Selects a key or combination of keys that, when pressed, will display the cursor locator.</p> <p>Note: Display the cursor locator must be set to When modifier <u>k</u>ey is pressed.</p>

Focus Enhancements

Focus enhancements make it easy to locate and follow the control focus when you tab and arrow key through menus, dialogs, toolbars, and other application controls.

When enabled, a choice of high visibility locators mark the position of the control with focus, without obscuring any surrounding text. You can choose from preset focus schemes or configure your own custom focus settings.

► To choose a preset focus scheme



On the **Magnifier** toolbar, select **Focus ► Scheme**, and then select the desired focus scheme.

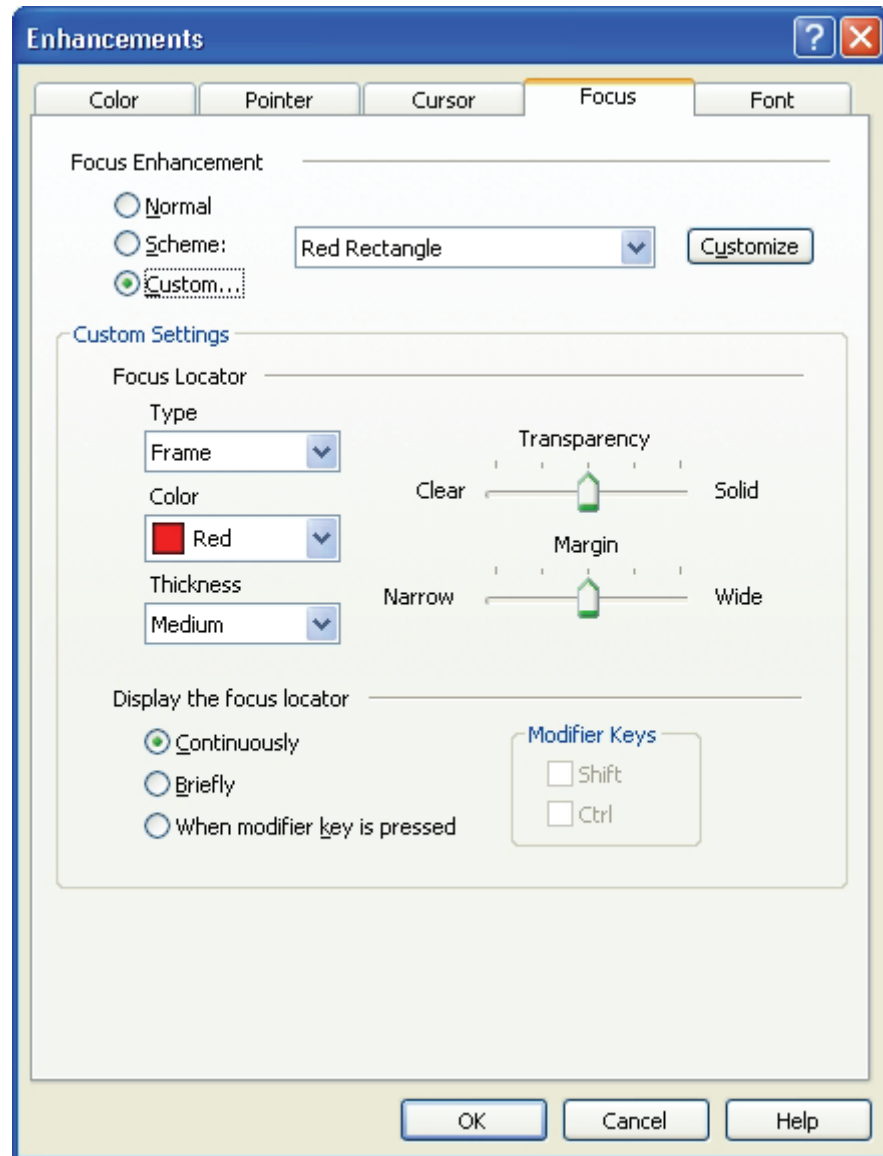
Note: You can turn focus enhancements on and off using the Focus Enhancements On/Off hotkey: **CTRL + SHIFT + O**.

► To configure custom focus settings

1. In the **Magnifier** menu, choose **Focus Enhancements...**

The Enhancements dialog appears with the Focus tab displayed.

2. Select **Custom...**
3. Adjust the custom settings as desired.
4. Click the **OK** button.



Focus tab

The following table describes the Focus Enhancement settings.

Setting	Description
<u>N</u> ormal	Disables all focus enhancements.
<u>S</u> cheme	Activates a preset focus scheme (selected in the neighboring combo box).
<u>C</u> ustom...	Activates the Custom Settings , allowing you to create your own custom focus scheme.
C <u>u</u> stomize	Activates and configures the Custom Settings to match the selected preset focus scheme. This allows you to use a preset scheme as the starting point for a custom scheme.
T <u>y</u> pe	Selects the type of focus locator: Block Displays a block over the control that has focus. Underline Displays a line beneath the control that has focus. Frame Displays a rectangular around the control that has focus.
C <u>o</u> lor	Sets the color for the focus locator.
T <u>h</u> ickness	Sets the thickness of the focus locator.

(Continued)

Transparency	<p>Sets the level of transparency for the focus locator. The transparency level controls the amount of the desktop image that is visible through the focus locator.</p> <p>Note: This setting is not available when the locator color is set to 'Invert'.</p>
Margin	Increases or decreases the space between the control with focus and the focus locator.
Continuously	Enables continuous display of the focus locator (when a control has focus).
Briefly	Enables brief display of the focus locator. When a control receives focus the locator is displayed for 1.5 seconds.
When modifier <u>key</u> is pressed	The focus locator is only displayed when the focus modifier keys are held down.
Modifier Keys	<p>Selects a key or combination of keys that, when pressed, will display the focus locator.</p> <p>Note: Display the focus locator must be set to When modifier <u>key</u> is pressed.</p>

Font Enhancements

With conventional screen magnifiers, the clarity of fonts (text characters) is degraded in the magnified view. As a result, many fonts are difficult to read, including; small fonts, serif and italic fonts, and most cursive and ornate fonts. These problems are eliminated with ZoomText's new 'xFont' text enhancement technology (patented).

With xFont, all font types are magnified with perfect clarity – at all magnification levels. In addition, xFont options allow you to fine-tune text legibility by applying **Smooth**, **Bold**, and **Condense** options. The Smooth option sharpens the edges of text characters. Bold increases the thickness of text characters. Condense increases the spacing between characters and/or lines of text.

If your system is too slow to support xFont, you can switch to Standard font enhancements, which displays medium quality text with faster system performance.

► **To switch font enhancement types**

Press the Font Enhancements hotkey: **CTRL + SHIFT + F**. Repeated presses of this hotkey cycles through the three enhancement type settings: **xFont**, **Standard** and **None**.

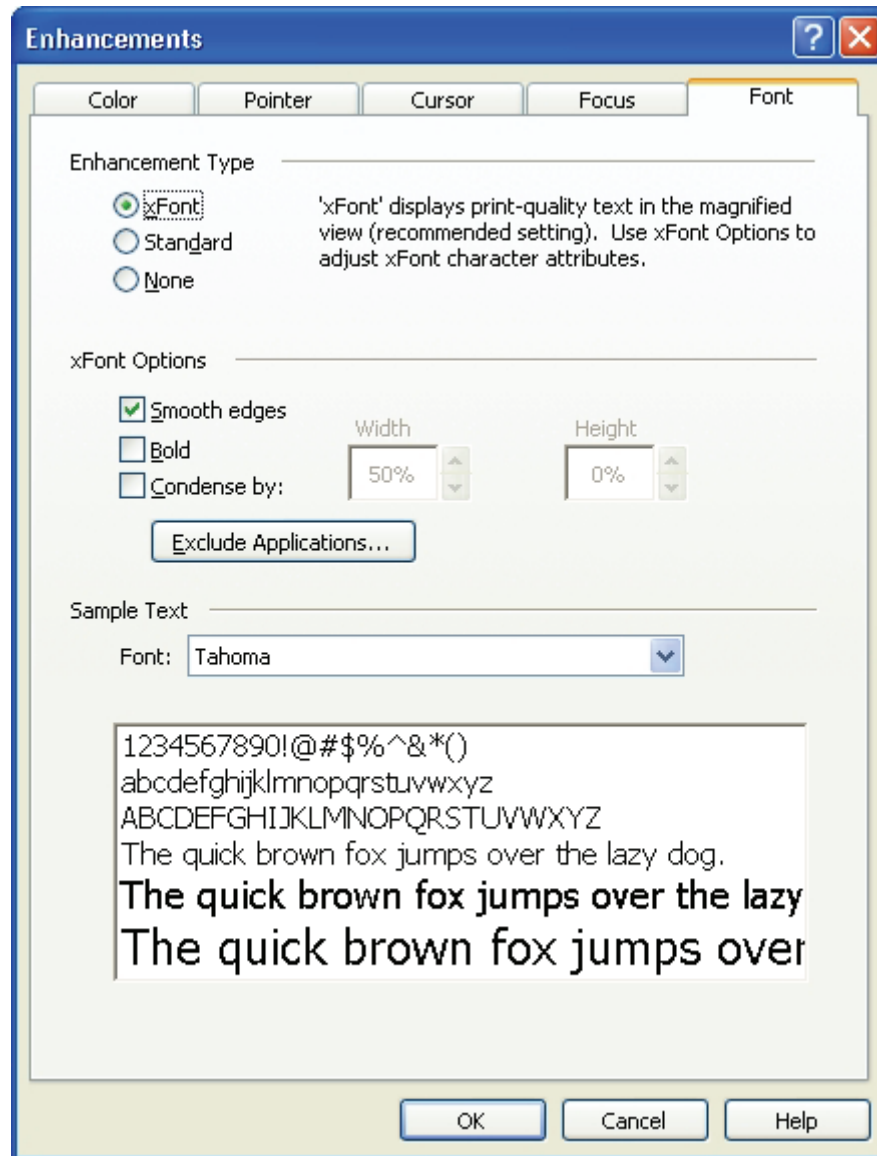
Note: You can also set the font enhancement type in the Font Enhancement dialog.

► **To configure font enhancement options**

1. In the **Magnifier** menu, choose **F**ont Enhancements...

The Enhancements dialog appears with the Font tab displayed.

2. Adjust the Font enhancement options as desired.
3. Click the **OK** button.



Font tab

The following table describes the Font Enhancement settings.

Setting	Description
<u>x</u> Font	Displays print quality text in the magnified view. Note: xFont is the recommended and default font enhancement type.
Stand <u>ard</u>	Displays medium quality text in the magnified view. Use this setting when faster system performance is required. Note: The Standard enhancement type is not applied when using fractional magnification levels.
<u>N</u> one	Disables all smoothing of text and graphics. Use this setting when you want to view the magnified screen without any font enhancements.
<u>S</u> mooth edges *	Text character edges are smoothed.
<u>B</u> old *	Text characters are bolded.
<u>C</u> ondense by *	Each text character is condensed, increasing inter-character and line spacing.
Width *	Condenses the width of text characters from 0% (no condensing) to 100% (maximum condensing).

(Continued)

Height *	Condenses the height of text characters from 0% (no condensing) to 100% (maximum condensing). *
<u>E</u> xclude Applications... *	Displays settings for excluding the use of xFont in problem applications. See "Excluding xFont in Problem Applications" below.
Font *	Displays a list of fonts available on your system. The selected font is displayed in the sample text box according to the selected enhancement type and xFont options.

* These settings only apply when using the xFont enhancement type.

Excluding xFont in Problem Applications

Some applications contain user-interface components that are not compatible with ZoomText's xFont feature, resulting in missing or corrupted text. When this occurs, you can exclude the use of xFont within the problem application by selecting (checking) the application's name in the **Exclude Applications** dialog box.

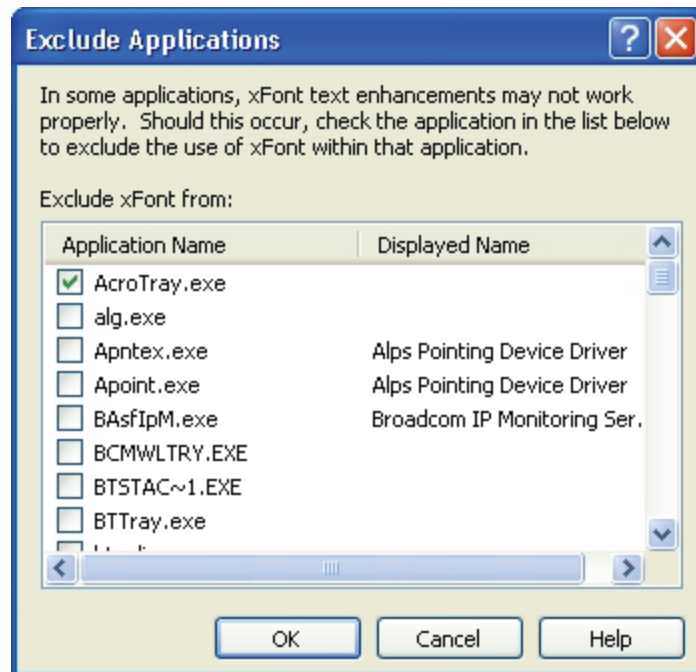
Note: Applications that have known conflicts with xFont have been excluded in the default ZoomText configuration.

► To exclude xFont in selected applications

1. In the Font Enhancements dialog, select **Exclude Applications...**

The Exclude Applications dialog appears.

2. In the **Exclude xFont from** listbox, check the applications in which you would like to exclude the use of xFont.
3. Click the **OK** button.



Exclude Applications dialog

The following table describes the Exclude Applications settings.

Setting	Description
Exclude xFont from:	Displays a list of applications that are currently running on the system. Checked applications are excluded from xFont processing; the Standard font enhancement type is applied in these applications.

Finders

ZoomText's Desktop, Web and Text Finders allow you to quickly find applications and documents, web page links, and text within the active application or the entire screen. With intuitive filters and search tools, you can quickly find any item of interest.

Desktop Finder

The Desktop Finder helps you find and open programs and documents located in the Windows desktop environment - including the quick launch bar, system tray and control panel. When executing the Desktop Finder, a dialog box displays a list of items located in the desktop environment. This list can be filtered and searched, allowing you to quickly locate the desired item. Desktop Finder 'Actions' allow you to open the item or view its properties.

► To use the Desktop Finder



1. On the **Magnifier** toolbar, select **Desktop**.

The Desktop Finder dialog appears.

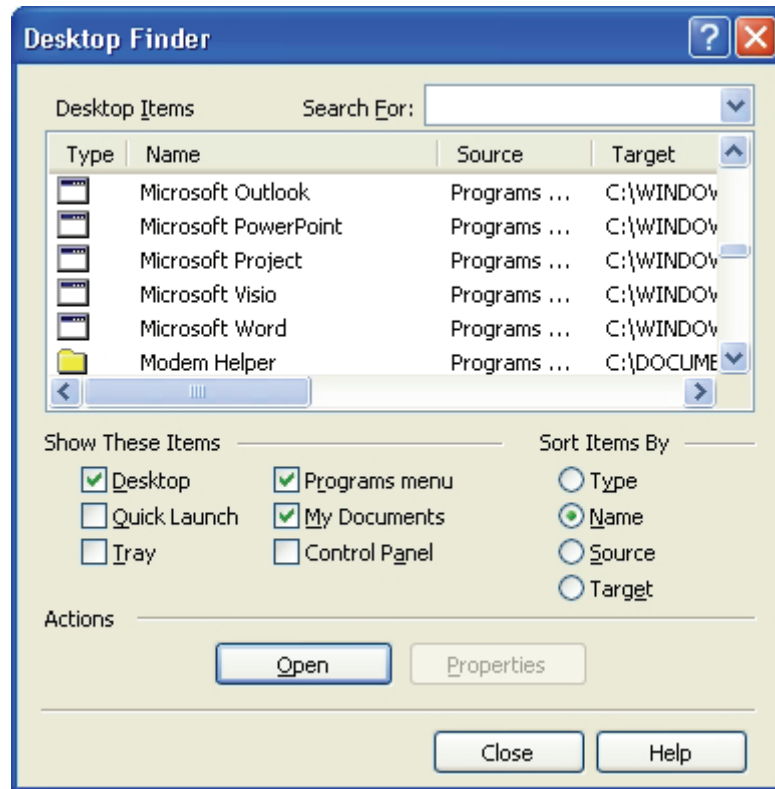
Hotkey: **CTRL + SHIFT + D**

2. Filter and sort the **Desktop Items** list by selecting the desired options under **Show These Items** and **Sort Items By**.
3. To narrow the search, type the information you are searching for in the **Search For** combo box, or select a recent entry from the combo box list.

*As you type, the **Desktop Items** list is automatically filtered to display only items that contain the search string.*

4. Select the desired item in the **Desktop Items** list.
5. Click the **Open** button to launch the selected program or open the selected folder.
6. Click the **Properties** button to view the properties for the selected item.

*When selecting the **Properties** button the Desktop Finder remains open, allowing you to repeat this action on other desktop items. To bring the Desktop Finder dialog back into view, switch the focus back to ZoomText by pressing **ALT + INSERT**, or click the ZoomText button in the Windows task bar.*



Desktop Finder dialog

The following table describes the Desktop Finder settings.

Setting	Description
Desktop <u>I</u> tems	Displays a list of desktop items - according to the selections under Show These Items and Sort Items By .
Search <u>F</u> or	Provides a place for you to type the information you want to search for; or you can select a recent entry from the combo box list. As you type, the Desktop Items list is automatically filtered to display only items that contain the search string.

(Continued)

<u>D</u> esktop	Programs, shortcuts and folders located on the Windows desktop are shown in the Desktop Items listbox.
<u>Q</u> uick Launch	Shortcuts located in the Quick Launch toolbar are shown in the Desktop Items listbox.
<u>T</u> ray	Utilities located in the system tray are shown in the Desktop Items listbox.
<u>P</u> rograms menu	Items in the Start ► Programs menu are shown in the Desktop Items listbox.
<u>M</u> y Documents folder	Items in the My Documents folder are shown in the Desktop Items listbox.
Control <u>P</u> anel	Applets in the Control Panel are shown in the Desktop Items listbox.
<u>T</u> ype	The Desktop Items are sorted by type (programs, folders, documents and links).
<u>N</u> ame	The Desktop Items are sorted by name.
<u>S</u> ource	The Desktop Items are sorted by source (where the item came from, such as the Programs Folder).
<u>T</u> arget	The Desktop Items are sorted by target string (i.e. directory path or URL).
<u>O</u> pen	Opens the selected item.
<u>P</u> roperties	Displays the properties dialog for the selected item.

Web Finder

The Web Finder helps you find links and controls in Internet Explorer, Firefox 2.0, AOL, HTML email, and HTML Help systems. When executing the Web Finder, a dialog box displays a list of links and controls in the active HTML document. This list can be filtered and searched, allowing you to quickly find the desired item. Web Finder 'Actions' allow you to execute a selected link, scroll to a link or control, or begin reading (with AppReader) at the location of a link or control.

► To use the Web Finder



1. On the **Magnifier** toolbar, select **Web**.

The Web Finder dialog appears.

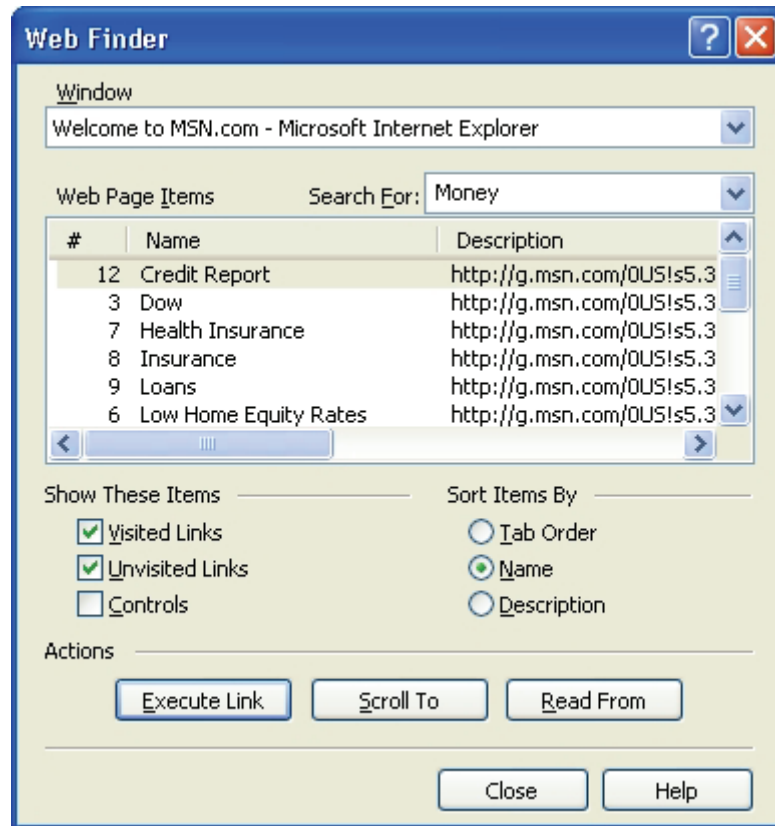
Hotkey: **CTRL + SHIFT + W**

2. Filter and sort the **Web Page Items** list by selecting the desired options under **Show These Items** and **Sort Items By**.
3. To narrow the search, type the information you are searching for in the **Search For** combo box, or select a recent entry from the combo box list.

*As you type, the **Web Page Items** list is automatically filtered to display only items that contain the search string.*

4. Select the desired item in the **Web Page Items** list.
5. Click the **Execute Link** button to execute the selected link. Click the **Scroll To** button to scroll the selected item into view. Click the **Read From** button to begin reading (with AppReader) at the location of the selected item.

Note: The **Read From** option is not available in ZoomText *Magnifier*.



Web Finder dialog

The following table describes the Web Finder settings.

Setting	Description
Window	Displays a list of all web pages (open in Internet Explorer), HTML email (open in Outlook) and HTML Help windows that are currently open. Links and controls that appear in the selected window are displayed in the Web Page Items listbox.
Web Page Items	Displays a list of links and controls from the web page specified in the Window combo box.

(Continued)

<u>S</u> earch <u>F</u> or	Provides a place for you to type the information you want to search for; or you can select a recent entry from the combo box list. As you type, the Web Page Items list is automatically filtered to display only items that contain the search string.
<u>V</u> isited Links	Links that have been visited are shown in the Web Page Items listbox.
<u>U</u> nvisited Links	Links that have not been visited are shown in the Web Page Items listbox.
<u>C</u> ontrols	Controls (edit boxes, buttons, etc.) are shown in the Web Page Items listbox.
<u>T</u> ab Order	Sorts the Web Page Items listbox by the tab order of the links and controls.
<u>N</u> ame	Sorts the Web Page Items listbox by item name.
<u>D</u> escription	Sorts the Web Page Items listbox by item description (URL and/or control type).
<u>E</u> xecute Link	Executes the selected link. Note: Execute Link is disabled (grayed out) when a control item is selected.
<u>S</u> croll To	Scrolls the selected link or control into view and sets the focus to the object.
<u>R</u> ead From	Launches AppReader and begins reading from the location of the selected item. Note: The Read From option is not available in ZoomText <i>Magnifier</i> .

Text Finder

The Text Finder helps you locate words or phrases within the active application window or the entire screen. After entering the text you want to search for, the Text Finder highlights and reads each found occurrence of the text or the entire line that contains the text.

Note: Text is not spoken by ZoomText *Magnifier*.

► To use the Text Finder



1. On the **Magnifier** toolbar, select **Text**.

The Text Finder dialog appears. For information on this dialog, see "Text Finder Settings" in this chapter.

Hotkey: **CTRL + SHIFT + T**

2. In the **Search For** box, type the word or phrase you want to search for.
3. Select any other Text Finder options you want to use.
4. Click the **Search** button.

The Text Finder dialog is hidden and the first occurrence of the search text is highlighted and spoken according to the selected options. The Text Finder toolbar appears above the found text, providing controls for navigating and reading occurrences of the search text.

Note: Text is not spoken by ZoomText *Magnifier*.

5. To navigate to the next or previous occurrence of the search text, use the Text Finder toolbar or associated Text Finder commands.
6. To exit the Text Finder, right-click or press **ESC**.

Text Finder Toolbar

The Text Finder toolbar appears above the found text, providing controls for navigating and reading occurrences of the search text.



The Text Finder toolbar



Read * Reads the entire line that contains the found word.
Shortcut Key: **ENTER**



Previous Displays the previous occurrence of the search text.

Shortcut Key: **LEFT** or **SHIFT + TAB**



Next Displays the next occurrence of the search text.
Shortcut Key: **RIGHT** or **TAB**



Start AppReader * Launches AppReader and begins reading from the location of the highlighted search text.
Shortcut Key: **A** or **CTRL + ALT + A**



Settings Returns to the Text Finder dialog.
Shortcut Key: **BACKSPACE**



Close Exits the Text Finder.
Shortcut Key: **ESC**

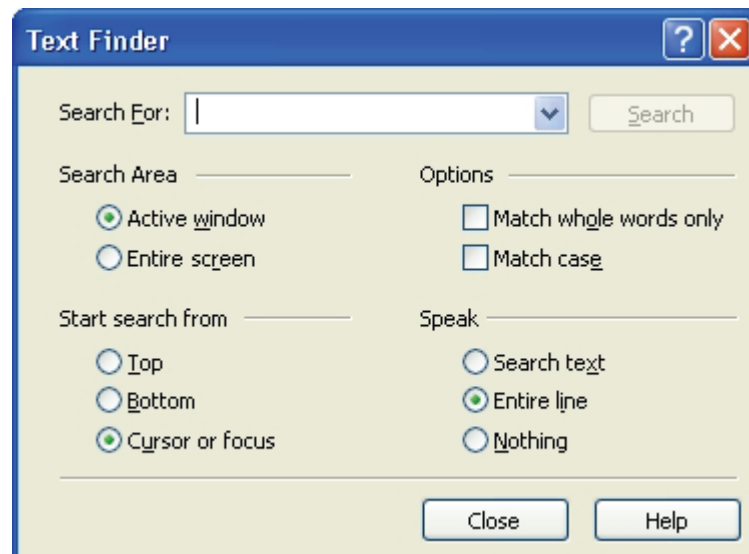
* This option is not available in ZoomText *Magnifier*.

The following commands can also be used to speak the highlighted search text; or the line or sentence in which it resides.

To...	Press...
Say current word/phrase	CTRL + NUMPAD 5
Say line	SHIFT + NUMPAD 5
Say sentence	CTRL + ALT + NUMPAD 5

Text Finder Settings

The Text Finder settings allow you to refine and accelerate your search. These options allow you to select the search area, search starting point and text matching criteria. When running *ZoomText Magnifier/Reader*, you can also configure Text Finder to speak each found occurrence of the search text, or the entire line containing the text.



Text Finder dialog

The following table describes the Text Finder settings.

Setting	Description
Search <u>F</u> or	Provides a place for you to type the text you want to search for; or you can select a recent entry from the combo box list.
<u>S</u> earch	Finds and selects the next occurrence of the text specified in the Search <u>F</u>or box.
Active <u>w</u> indow	Text Finder searches the active application or dialog window for occurrences of the search text.
Entire sc <u>r</u> een	Text Finder searches the entire screen for occurrences of the search text.
<u>T</u> op	ZoomText searches the selected search area from top to bottom.
<u>B</u> ottom	ZoomText searches the selected search area from bottom to top.
<u>C</u> ursor or focus	ZoomText starts searching from the cursor position (when a cursor is present) or the control that currently has focus.
Match wh <u>o</u> le words only	When selected, ZoomText searches for occurrences that are whole words and not part of a larger word.

(Continued)

Match case <u>u</u>	When selected, ZoomText finds only those instances in which the capitalization matches the text typed into the Search For box.
Search text * <u>t</u>	When an instance of the search text is found, only the search text is spoken.
Entire line * <u>l</u>	When an instance of the search text is found, the entire line containing the search text is spoken.
<u>N</u> othing *	When an instance of the search text is found, the text is not spoken.

* These settings are not available in ZoomText *Magnifier*.

Navigation Settings

Navigation settings control how ZoomText keeps tracked activity in view, including movement of the mouse pointer and text cursor, and keyboard navigation through menus, dialogs and other application controls. With these settings you can:

- Select the types of activity that will be tracked.
- Define how tracked items are aligned in the zoom window.
- Route and constrain mouse pointer for smoother navigation.

Tracking

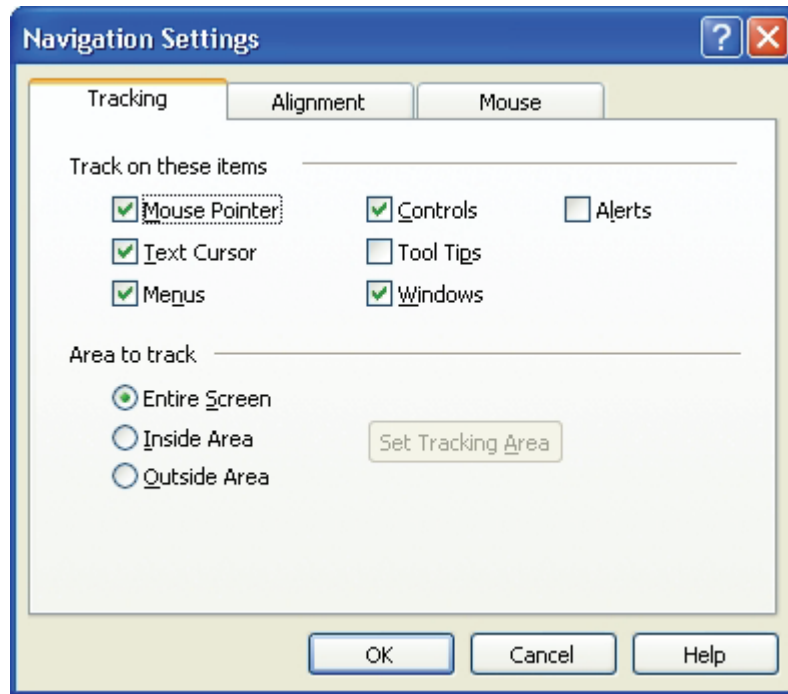
As you move the mouse, type text, and navigate menus, dialogs and other program controls, the zoom window automatically scrolls to keep the focus in view. This behavior is driven by ZoomText's tracking options, which allow you to choose the items that you want ZoomText to track (when they become active). You can also limit tracking to a selected area of the screen.

► To adjust the tracking options

1. In the **S**ettings menu, choose **T**racking...

The Navigation Settings dialog appears with the Tracking tab displayed.

2. Adjust the tracking options as desired.
3. Click the **OK** button.



Tracking tab

The following table describes the Tracking settings.

Setting	Description
<u>M</u> ouse pointer	Track on the mouse pointer when it moves.
<u>T</u> ext cursor	Track on the text cursor when it moves.
<u>M</u> enus	Track on highlighted menu items.
<u>C</u> ontrols	Track on controls when they receive focus. Controls include buttons, check boxes, listboxes, etc.
<u>T</u> ool Tips	Track on tool tips when they appear.

(Continued)

<u>W</u> indows	Track on windows when they are activated.
A <u>l</u> erts	Track on alert popups when they appear.
Entire <u>S</u> creen	Allows activity anywhere on the screen to be tracked.
<u>I</u> nside Area	Limits tracking to activity inside the defined tracking area. The tracking area can be set by clicking the Set Tracking Area button.
<u>O</u> utside Area	Limits tracking to activity outside the defined tracking area. The tracking area can be set by clicking the Set Tracking Area button.
Set Tracking <u>A</u> rea	Activates a tool for setting the Inside and Outside tracking areas (whichever is currently selected). When the tool is activated, a tracking area frame with sizing handles appears on the screen. To size the frame, drag any handle. To move the frame, drag inside the frame. Right-click to exit the tool.

Turning tracking on and off

At times you may want to disable tracking – to keep a specific view in the zoom window.

► To turn tracking on and off

Press the Tracking On/Off hotkey:

CTRL + ALT + SHIFT + T.

Note: ZoomText configurations are always saved with Tracking in the on state.

Alignment

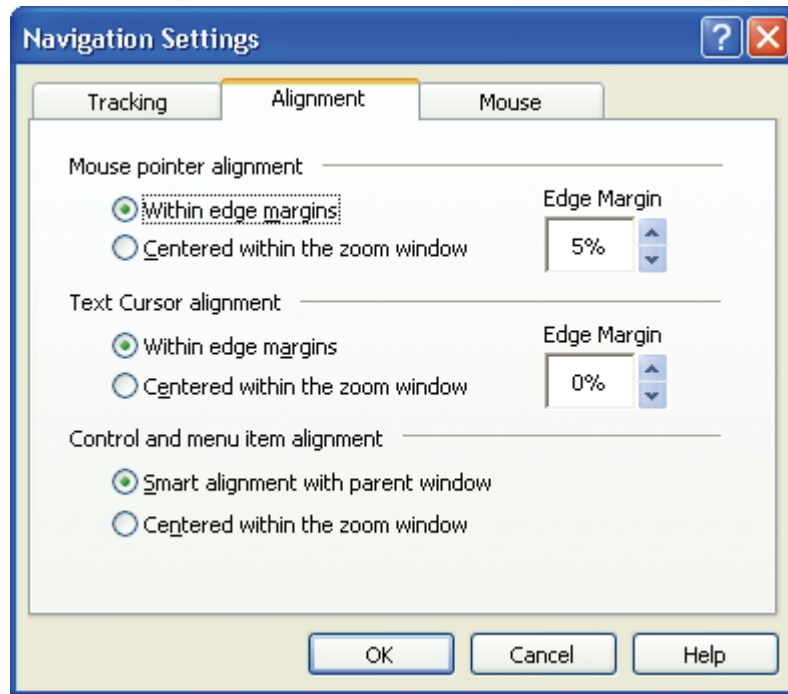
Alignment options control how the zoom window scrolls to keep tracked items in view. There are two general types of alignment; edge and center. With edge alignment, the zoom window scrolls only as needed to keep the tracked object in view. With center alignment, the zoom window scrolls as needed to keep the tracked object in the center of the zoom window. A third alignment type, "smart alignment", scrolls a control and the maximum portion of its parent menu or window into view.

► **To adjust the alignment options**

1. In the **S**ettings menu, choose **A**lignment...

The Navigation Settings dialog appears with the Alignment tab displayed.

2. Adjust the alignment options as desired.
3. Click the **OK** button.



Alignment tab

The following table describes the Alignment settings.

Setting	Description
Within edge margins	The zoom window scrolls only as needed to bring the tracked object within the edge margins.
Centered within the zoom window	The zoom window scrolls to keep the tracked object centered in the magnified view.

(Continued)

Edge Margin	Defines how close to the edge of the zoom window a tracked object can move before the window begins to scroll. The edge margin can be set from 0% (no margin) to 50% (half the width and height of the zoom window).
<u>S</u> mart alignment with parent window	The zoom window scrolls to bring the tracked control or menu item <i>and</i> the maximum portion of its parent window or menu into view.

Mouse

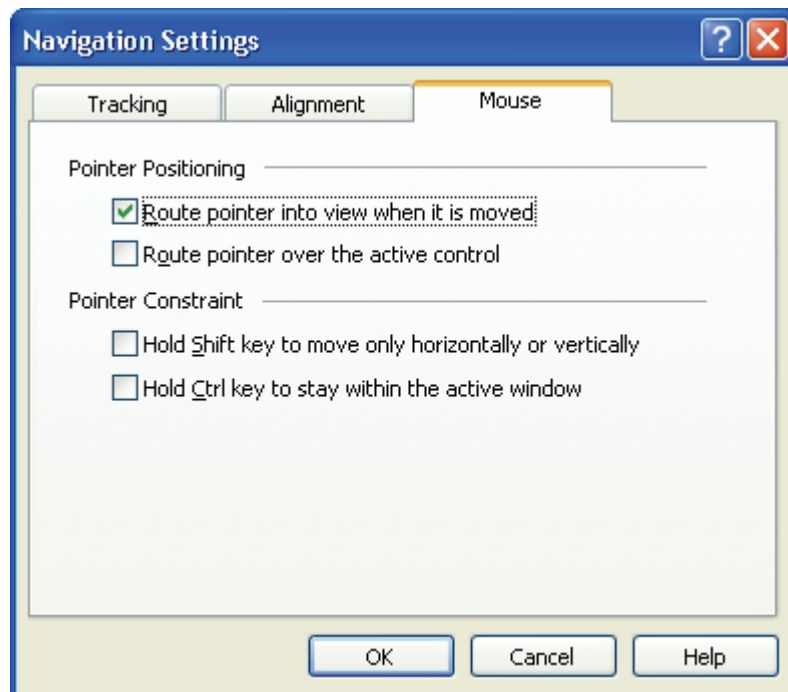
The Mouse navigation options, pointer positioning and pointer constraints, make it easy to explore and move about the screen. With pointer positioning, the mouse pointer is always brought into view when you need it. With pointer constraints, you can limit mouse pointer movement to horizontal or vertical directions, or within the active window.

► To adjust the mouse navigation options

1. In the **Settings** menu, choose **Mouse...**

The Navigation Settings dialog appears with the Mouse tab displayed.

2. Adjust the mouse navigation options as desired.
3. Click the **OK** button.



Mouse tab

The following table describes the Mouse settings.

Setting	Description
<u>R</u> oute pointer into view when it is moved	Automatically moves the pointer to the center of the magnified view – whenever the pointer moves while located outside the view.
<u>R</u> oute pointer over the active control	Automatically moves the pointer to menu items and dialog controls when they receive focus.
Hold <u>S</u> hift key to move only horizontally or vertically	While holding down the SHIFT key, the mouse pointer moves horizontally or vertically only, depending on the initial direction of mouse movement. This constrained movement provides smoother scrolling through rows and columns of information.
Hold <u>C</u> trl key to stay within the active window	While holding down the CTRL key, mouse pointer movement is constrained to the active window, preventing you from accidentally scrolling away from your area of interest.

Smooth Panning

Smooth panning (patent-pending) provides a more natural panning motion when the magnified view scrolls to keep the focus in view. As you type text and navigate menus, dialogs and other program controls the magnified view smoothly pans across the screen, rather than jumping in an abrupt manner. You can also use “smooth mouse panning” to smoothly pan and explore in any direction.

Note: Smooth mouse panning is only available when the zoom window type is set to **Full**.

► To enable and adjust the smooth panning options

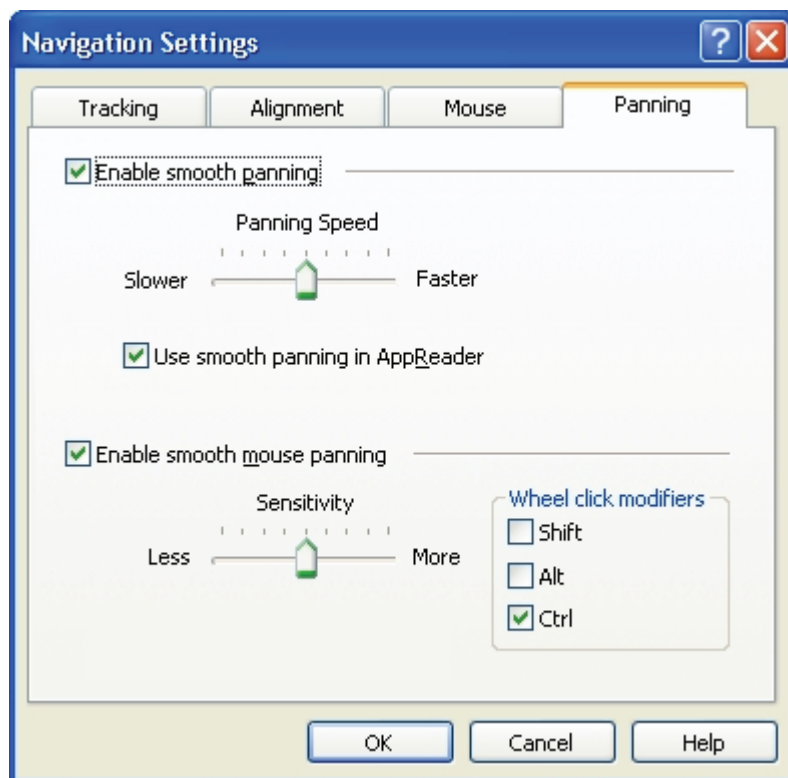
1. In the **S**ettings menu, choose **P**anning...

The Navigation Settings dialog appears with the Panning tab displayed.

2. Make sure the **Enable smooth panning** box is checked.
3. Adjust the panning options as desired.
4. Click the **OK** button.

► To turn smooth panning on and off

- Press the Smooth Panning On/Off hotkey:
WINDOWS + SHIFT + P.



Panning tab

The following table describes the Panning settings.

Setting	Description
Enable smooth panning	Enables ZoomText's smooth panning feature.
Panning Speed	Controls how fast ZoomText pans from one location to another.
Use smooth panning in AppReader	Enables smooth panning between highlighted words in AppReader.
Enable smooth mouse panning	Enables ZoomText's smooth mouse panning feature.

(Continued)

Sensitivity	Controls the sensitivity of smooth mouse panning when moving the mouse. At lower settings the mouse must be moved further to start panning and to accelerate panning speed.
Wheel click modifiers	Selects the key combination to be used when clicking the mouse wheel to activate smooth mouse panning. The selected keys must be held down while clicking the mouse wheel.

► **To use smooth mouse panning**

1. Make sure the zoom window type is set to **Full**.
2. Press the Smooth Mouse Panning hotkey:
CTRL + mouse wheel click.
The mouse panning tool becomes active.
3. To start panning, move the mouse pointer in the direction you want to pan.
4. To increase the panning speed, move the pointer further away from the center point.
5. To decrease the panning speed, move the pointer back toward the center point.
6. To change the panning direction, move the pointer to a new direction (relative to the center point).
7. To stop panning, move the pointer back to the center point.
8. To exit smooth mouse panning, right click or press **ESC**.

Smooth Scrolling

Scroll hotkeys allow you to smoothly scroll to any area of the screen, or jump instantly to a specific screen location.

Note: **Num Lock** must be turned off when using ZoomText commands that use the numeric keypad.

► To smoothly scroll the zoom window

1. Hold down **ALT** and press the arrow key that corresponds to the desired direction.

To...	Press...
Scroll left	ALT + LEFT
Scroll right	ALT + RIGHT
Scroll up	ALT + UP
Scroll down	ALT + DOWN

2. To increase the scrolling speed, press the same arrow key without releasing the **ALT** key (each press will increase the speed).
3. To decrease the scrolling speed, press the opposite arrow key without releasing the **ALT** key (each press will decrease the speed until scrolling stops).
4. To scroll in a different direction, press the arrow key corresponding to the new direction without releasing the **ALT** key.
5. To stop scrolling, release the **ALT** key.

► **To jump to an edge or the center of the screen**

Use the following hotkeys:

To...	Press...
Jump to left edge	ALT + HOME
Jump to right edge	ALT + END
Jump to top edge	ALT + PAGE UP
Jump to bottom edge	ALT + PAGE DOWN
Jump to center	ALT + NUMPAD 5

► **To save and restore a specific view of the screen**

The current view can be saved and restored (at a later time) using the following hotkeys:

To...	Press...
Save the current view	ALT + NUMPAD /
Restore the saved view	ALT + NUMPAD *

