

CHAPTER 5

Preferences

Preferences are convenience features that control how ZoomText starts, exits and appears on the Windows desktop while running. You can also enable Automatic Updating, so that ZoomText automatically checks for available online updates each time you launch the program.

Program Preferences

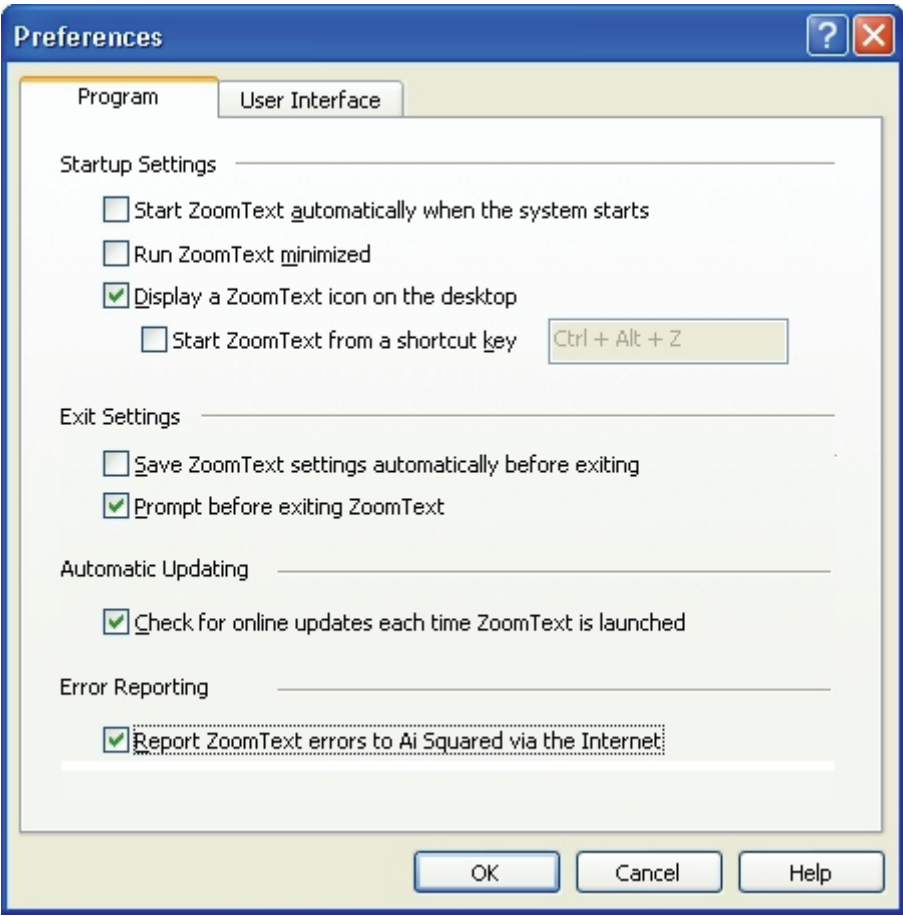
Program preferences control how ZoomText starts and exits, and allows you to enable automatic updating.

► To adjust the program preferences

1. In the **S**ettings menu, choose **P**rogram...

The Preferences dialog appears with the Program tab displayed.

2. Adjust the program preference options as desired.
3. Select the **OK** button.



Program tab

The following table describes the Program preference settings.

Setting	Description
Start ZoomText <u>a</u> utomatically	ZoomText will automatically run each time you start your system.
Run ZoomText <u>m</u> inimized	The ZoomText user interface is minimized when ZoomText is started.
<u>D</u> isplay a ZoomText icon	Displays the ZoomText desktop icon.

(Continued)

<p>Start ZoomText from a shortcut <u>k</u>ey</p>	<p>Enables ZoomText to be started by pressing a shortcut key.</p> <p>The box to the right provides a space for you to define (type) the keyboard shortcut for starting or switching to ZoomText. Shortcut keys consist of a two modifier keys (any combination of CTRL, ALT, and SHIFT), and a primary key (any letter, number or symbol). For example, to define the ZoomText shortcut key as CTRL + SHIFT + Z, select the Shortcut key field, and then press CTRL, SHIFT and Z simultaneously.</p> <p>Note: When Start ZoomText from a shortcut key is enabled, no other program can use the defined shortcut key.</p>
<p><u>S</u>ave ZoomText settings automatically</p>	<p>All ZoomText settings are saved to the active configuration when the program exits.</p>
<p><u>P</u>rompt before exiting ZoomText</p>	<p>You are prompted to confirm your choice to exit the program.</p>

(Continued)

<u>C</u> heck for online updates	Each time you start ZoomText, if an Internet connection is established, ZoomText will check the Ai Squared website for available program updates. If updates are available, the Update Wizard will give you the option to download and install the updates.
<u>R</u> eport ZoomText errors to Ai Squared	When a ZoomText program error occurs, an error report is transmitted to Ai Squared via the Internet (if an active Internet connection exists). No personal information is included in the error report.

User Interface Preferences

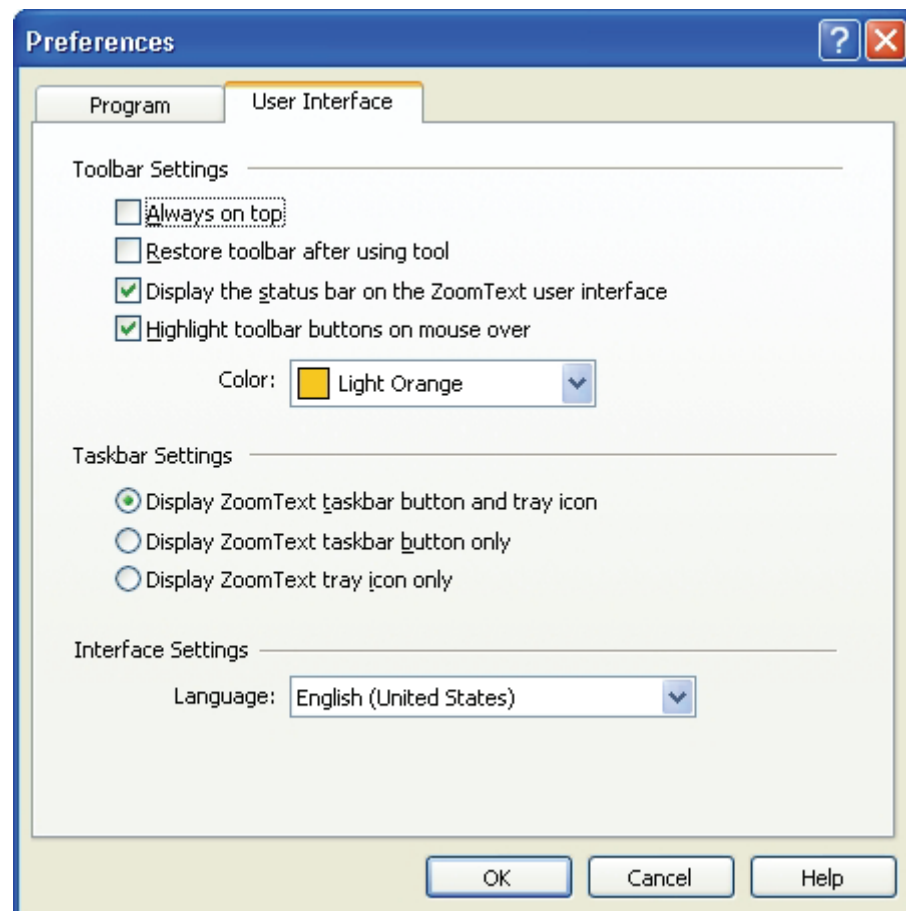
User interface preferences control how the ZoomText user interface appears on the Windows desktop.

► **To adjust the user interface preferences**

1. In the **Settings** menu, choose **User Interface...**

The Preferences dialog appears with the User Interface tab displayed.

2. Adjust the user interface options as desired.
3. Select the **OK** button.



User Interface tab

The following table describes the User Interface settings.

Setting	Description
<u>A</u> lways on top	The ZoomText user interface window will remain on top of all other windows, even when ZoomText is not the active application.
<u>R</u> estore toolbar after using tool	The ZoomText toolbar is always restored when exiting a ZoomText tool.
Display the <u>s</u> tatus bar	Displays the name of the active application and informs you when ZoomText's reading tools, reading zones and application settings are available to be used.
<u>H</u> ighlight toolbar buttons	When the mouse moves over buttons on ZoomText's toolbar, the buttons are highlighted.
Color	Selects the color for button highlighting.
Display <u>t</u> askbar button and tray icon	When ZoomText is running, its taskbar button and tray icon are both displayed.
Display taskbar <u>b</u> utton only	When ZoomText is running, only its taskbar button is displayed.
Display tray <u>i</u> con only	When ZoomText is running, only its system tray icon is displayed.
Language	Selects the language that the ZoomText user interface will appear in. Note: This option is not available in English only versions.

Windows Vista Preferences

Windows Vista preferences allow you to enable ZoomText's logon support and disable Windows ClearType font smoothing for improved quality of ZoomText's magnified text.

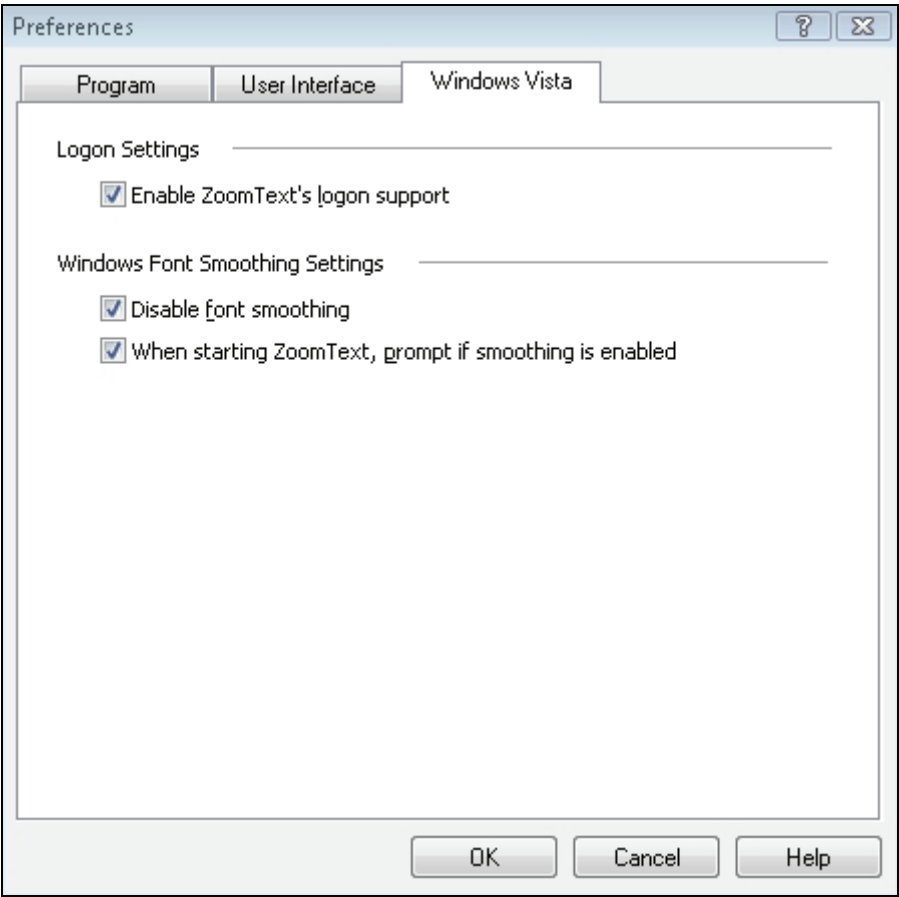
Note: The Windows Vista preferences only appear when running ZoomText in Windows Vista.

► **To adjust the Windows Vista preferences**

1. In the **S**ettings menu, choose **W**indows Vista...

The Preferences dialog appears with the Windows Vista tab displayed.

2. Adjust the Windows Vista options as desired.
3. Select the **OK** button.



Windows Vista tab

The following table describes the Windows Vista settings.

Setting	Description
<u>E</u> nable ZoomText's logon support	Enables ZoomText's magnification and screen reading support in the Windows Vista logon screen. The ZoomText logon toolbar is also displayed allowing you to adjust the magnification level, invert the screen colors, and turn screen reading on and off.

(Continued)

<p>Disable font smoothing</p>	<p>Disables Windows font smoothing option, allowing ZoomText to display the highest quality of magnified text. When Windows font smoothing is enabled, some of ZoomText magnified text may be degraded.</p> <p>This Windows font smoothing option can also be enable and disabled in Windows Appearance Settings dialog. To access these settings, in the Windows Control Panel, select Personalization ▶ Window Color and Appearance.</p> <p>Note: When selecting this option and clicking the OK button, you will be prompted to restart your system. Restarting the system insures that font smoothing has been disabled in all applications.</p>
<p>When starting ZoomText, prompt if smoothing is enabled</p>	<p>When you start ZoomText, if the Windows font smoothing option is enabled ZoomText will prompt you with the option to disable font smoothing.</p> <p>Note: If you choose to disable font smoothing you will be prompted to restart your system.</p>

