

A HumanWare Brailiant and an iOS Device

A Productive Combination.

All of Apple's iOS devices, (iPod touch, iPhone and iPad,) have built in braille access when using the VoiceOver screen reader. Utilizing this braille access allows a user to receive braille output on a supported braille display, and if the display has input keys, one can actually control the iOS device without ever touching the device's touch screen. For simplicity, the term iPhone will be used throughout this document to represent the line of Apple's iOS devices.

HumanWare's Brailiant line of Braille displays brings a sleek, ergonomic, and portable design to its user's fingertips. Developed with display lengths of 32 or 40 cells, and built in Bluetooth connectivity, these displays are the perfect size for mobile productivity with iPhones, while providing enough Braille for tasks requiring a significant amount of reading.

Once the two tools are paired, the Brailiant can be used to produce braille output, along with providing control over the iPhone without using the touch screen. Users have the capability to:

- Navigate applications, home screens, and other elements
- Select items
- Enter text into any editable applications such as text messages, emails, note files, etc, using the Brailiant's ergonomic braille input keys. Text can be entered in contracted or uncontracted braille.
- Read in braille from all accessible applications, including reading books from the iBooks application.
- In short, anything that could be accomplished with VoiceOver via the touch screen can be accomplished using the Brailiant's input keyboard



The Brailiant BI can be paired with all iPhones running iOS 5.1 as a Bluetooth Braille display. To connect the two devices the pairing has to be initialized from the iPhone, just as you would to pair with any other keyboard or Bluetooth device.

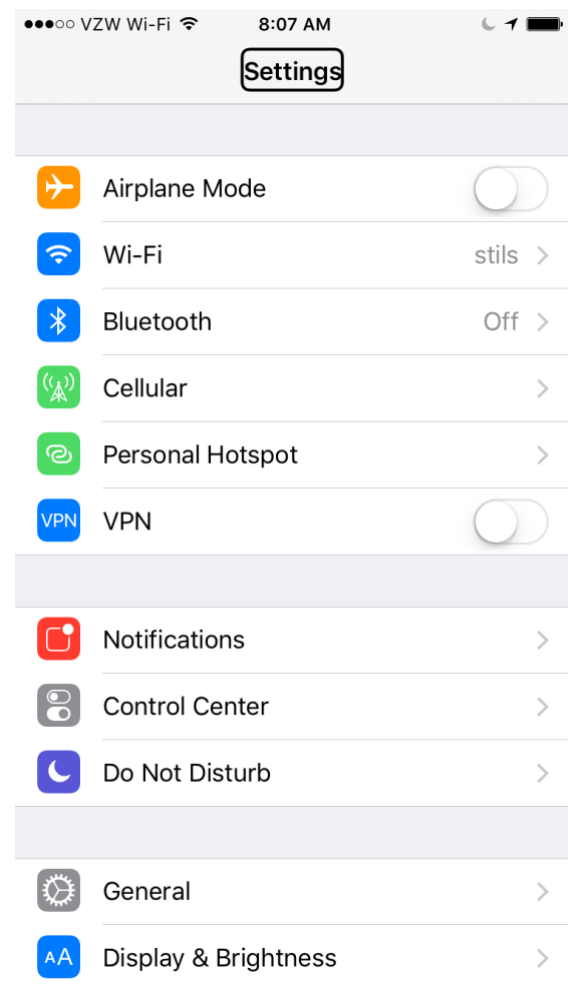
To make the connection do the following:

From the Brailiant menu, make sure to select Auto or Bluetooth as the communication channel.

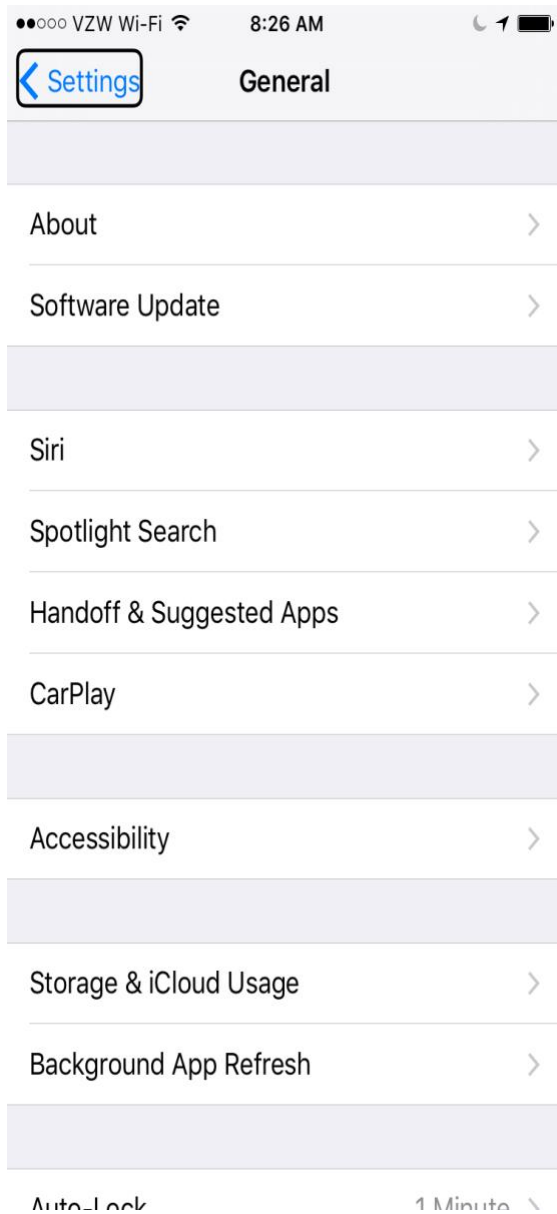
1. Tap on the settings application from the Home screen.



2. Tap on "General."



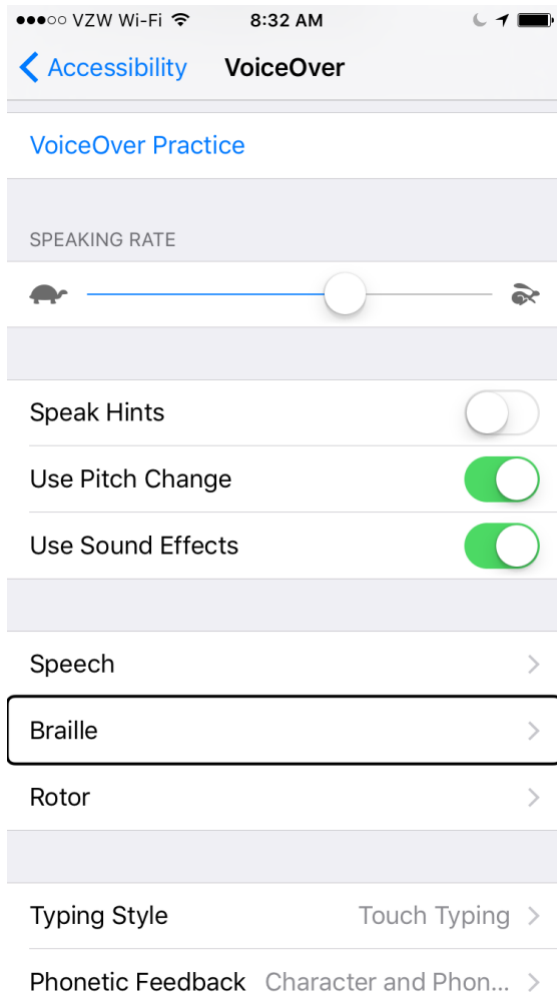
3. Towards the bottom of the screen tap on "Accessibility".



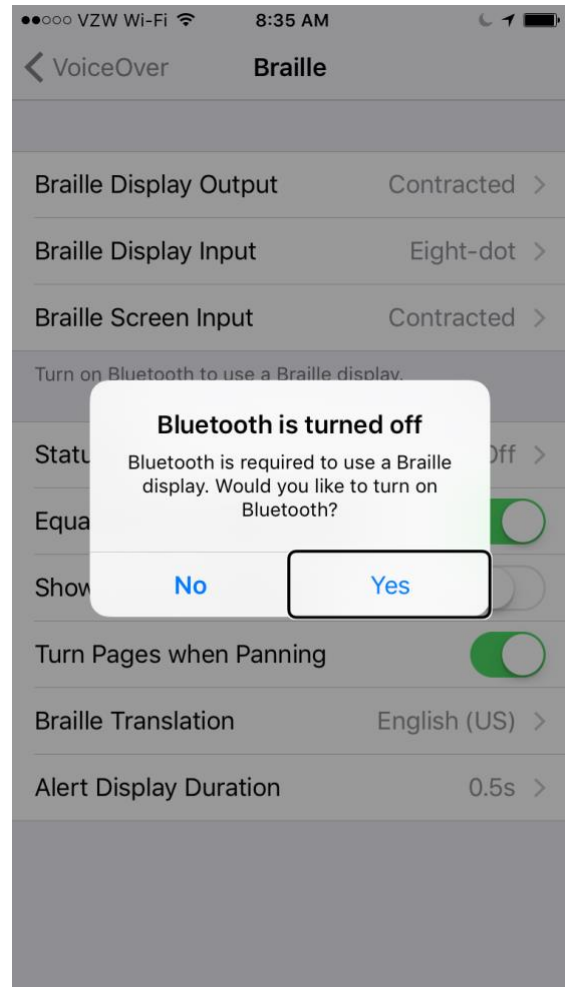
4. Tap on "VoiceOver". Make sure it is enabled.



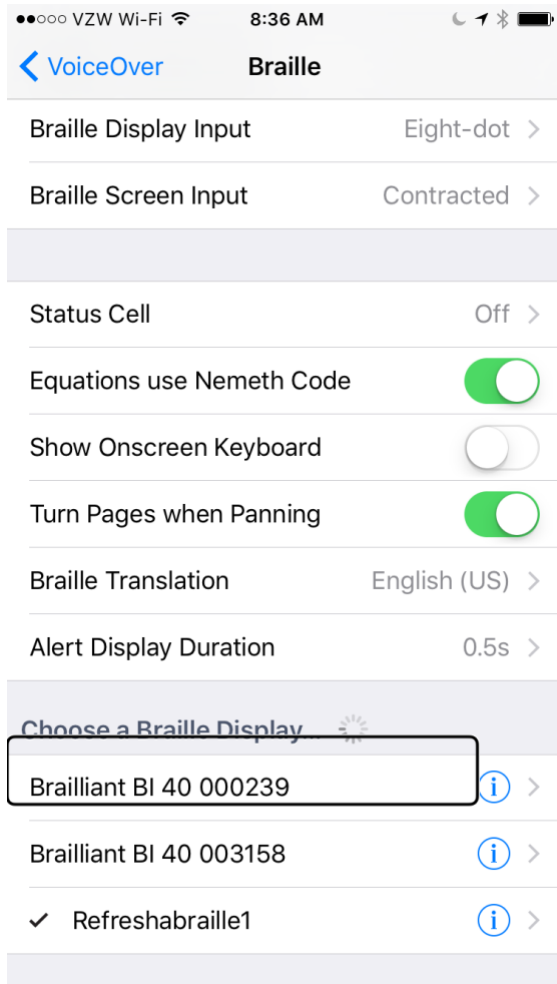
5. Double tap on "Braille".



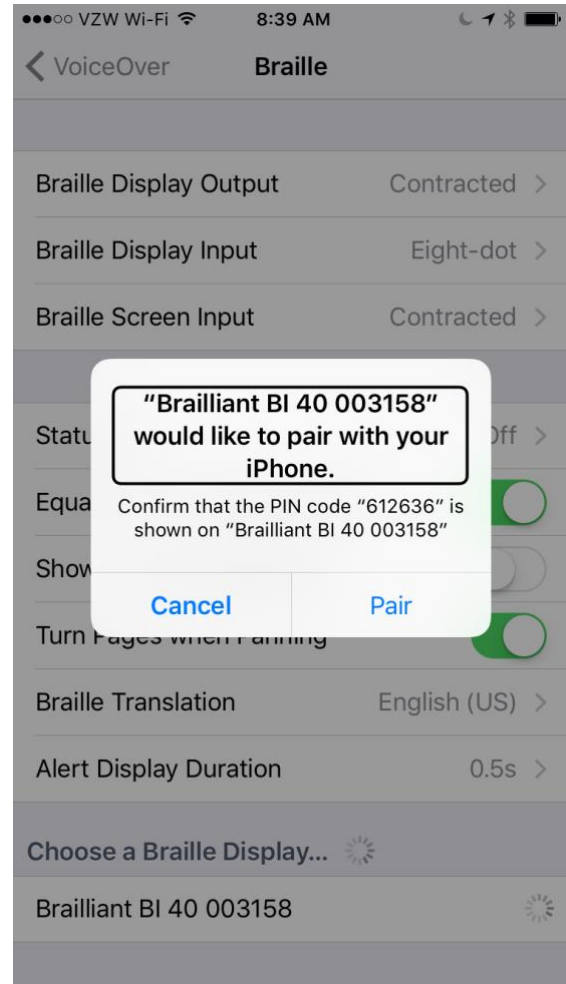
6. If Bluetooth is not enabled Double tap "Yes," to enable it.



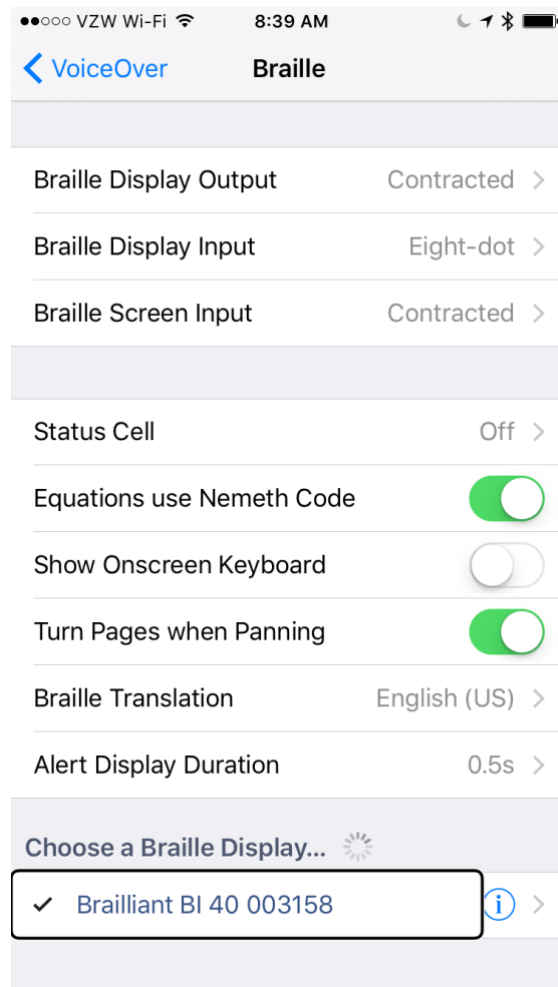
7. Double tap the Brailliant when displayed in the list.



8. Double tap on the "Pair" button to confirm pairing. The PIN code won't appear on your Braille display.



9. The Brailliant will now show as paired in the list of braille devices and the iPhone can now be controlled by the Brailliant's input keyboard. The Brailliant's braille display will represent in braille everything that is spoken by the VoiceOver screen reader. Note that if the iPhone is locked, pressing the Home button on the iPhone will unlock the phone and the Brailliant will automatically reconnect to it as a braille device.



Using Brailiant's keys

Braille keyboard:

Use the 8-dot Perkins Braille keyboard to enter text. The 8 keys of the Braille Keyboard are located above the Braille display. Some commands are also done using Braille letters in combination with the Space bar. For example Space with the letter M to open the Menu bar.



Command Keys:

The six command keys are located on each side of the Braille cells, Dots 1-2-3 to the left and Dots 4-5-6 to the right. To do Command T, you have to press on Command keys 2-3-4-5 for the Braille letter T.



Thumb Keys:

The keys facing you are normally operated by your thumbs so we call them "Thumb Keys" to differentiate them from the main keyboard keys. Use the Thumb Keys for Braille navigation.

Brailiant iPhone commands

The below list describes all commands for the Brailiant to effectively control an iPhone.

Basic navigation commands

Move to previous item	Command key 1 or Space with Dot 1
Move to next item	Command key 4 or Space with Dot 4
Pan Braille to the left	Command key 2 or Space with Dot 2
Pan Braille to the right	Command key 5 or Space with Dot 5
Double-tap the selected item	Routing cursor
Activate the Home button	Command H
Launch the task switcher	Command H twice quickly
Move to the first element	Command keys 1-2-3 or Space with Dots 1-2-3
Move to the last element	Command keys 4-5-6 or Space with Dots 4-5-6
Scroll left one page	Command keys 2-4-6 or Space with Dots 2-4-6
Scroll right one page	Command O or Space with O
Activate the Return key	Space with Dot 8 or Command E
Activate a Back button if present	Command B or Space with B

Reading commands

Read page starting at selected item	Command R or Space with R
Read page starting at the top	Command W or Space with W
Scroll down one page	Command keys 1-4-5-6 or Space with Dots 1-4-5-6
Scroll up one page	Command keys 3-4-5-6 or Space with Dots 3-4-5-6
Pause or Continue speech	Command P or Space with P

Information commands

Go to the Status bar	Command S or Space with S
Start VoiceOver help	Command K or Space with K
Quit VoiceOver help	Command B or Space with B
Speak page number or rows being displayed	Command keys 3-4 or Space with Dots 3-4

Rotor commands

Move to previous item using rotor setting	Command key 3 or Space with Dot 3
Move to next item using rotor setting	Command key 6 or Space with Dot 6
Select previous rotor setting	Command keys 2-3 or Space with Dots 2-3
Select next rotor setting	Command keys 5-6- or Space with Dots 5-6

Edit commands

Select text	Command keys 2-5-6 or Space with Dots 2-5-6
Unselect text	Command keys 2-3-5 or Space with Dots 2-3-5

Select all	Command keys 2-3-5-6 or Space with Dots 2-3-5-6
Cut	Command X or Space with X
Copy	Command C or Space with C
Paste	Command V or Space with V
Activate the Delete key	Command D or Space with D
Redo	Command keys 2-3-4-6 or Space with Dots 2-3-4-6
Undo	Command Z or Space with Z
Select all	Command keys 2-3-5-6 or Space with Dots 2-3-5-6

Miscellaneous commands

Activate the Volume Up button	Command keys 3-4-5 or Space with Dots 3-4-5
Activate the Volume Down button	Command keys 1-2-6 or Space with Dots 1-2-6
Switch between 8 and 6 dot Braille	Command keys 2-3-6 or Space with Dots 2-3-6
Toggle speech on and off	Command M or Space with M
Toggle Screen Curtain on and off	Command keys 1-2-3-4-5-6 or Space with Dots 1-2-3-4-5-6
Switch between contracted and uncontracted Braille	Command G or Space with G
Toggle expanded status description when Status cells are activated	Status Routing cursors
Activate the Tab key	Command T or Space with T
Activate the Shift with Tab keys	Command keys 1-2-5-6 or Space with Dots 1-2-5-6
Toggle announcement history	Command N or Space with N
Activates the Eject key	Command keys 1-4-6 or Space with Dots 1-4-6