

SmartView Graduate

Getting Started

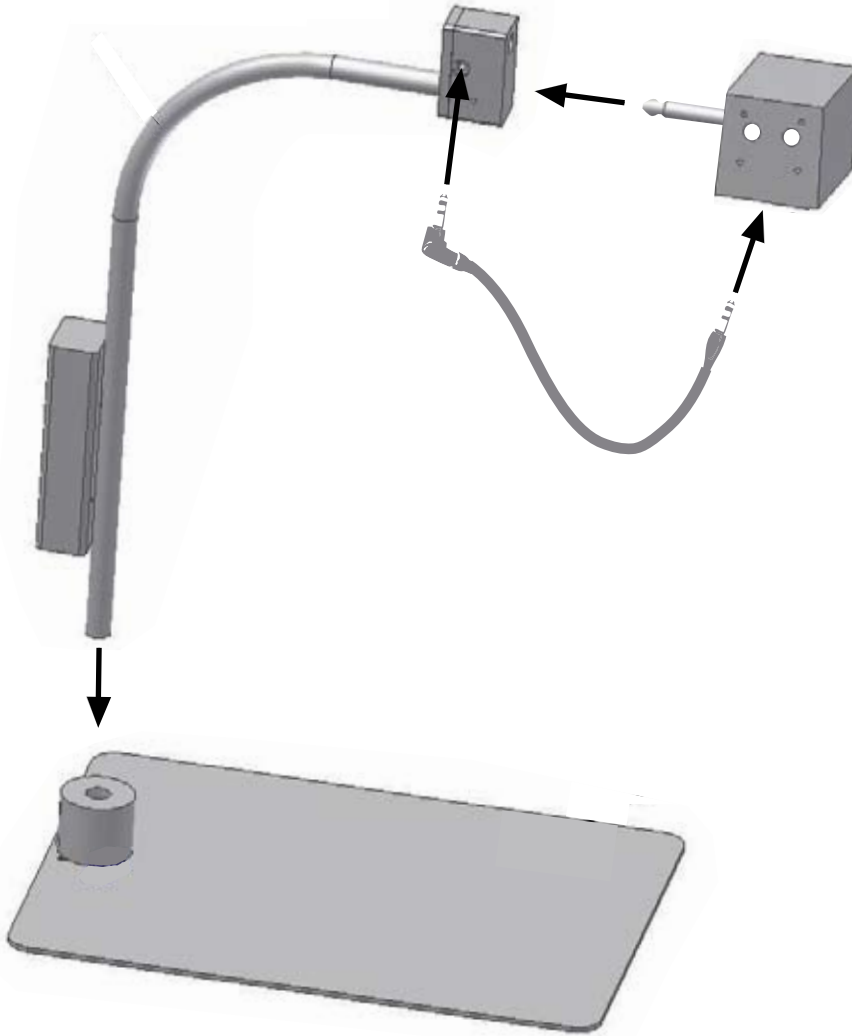
This document will show you how to install the software and assemble the SmartView Graduate. A list of commands is also included to help you get the most out of your SmartView Graduate's many features.

CAUTION: Do not connect the SmartView Graduate to your computer before installing the Graduate Setup software.

1. Contents of the Package

- **Camera**
- **Base plate**
- **Arm**
- **Two USB cables**
- **One controller cable**
- **CD-ROM**
- **Camera Case**
- **Getting started guide**

2. Assembling SmartView Graduate



Note:

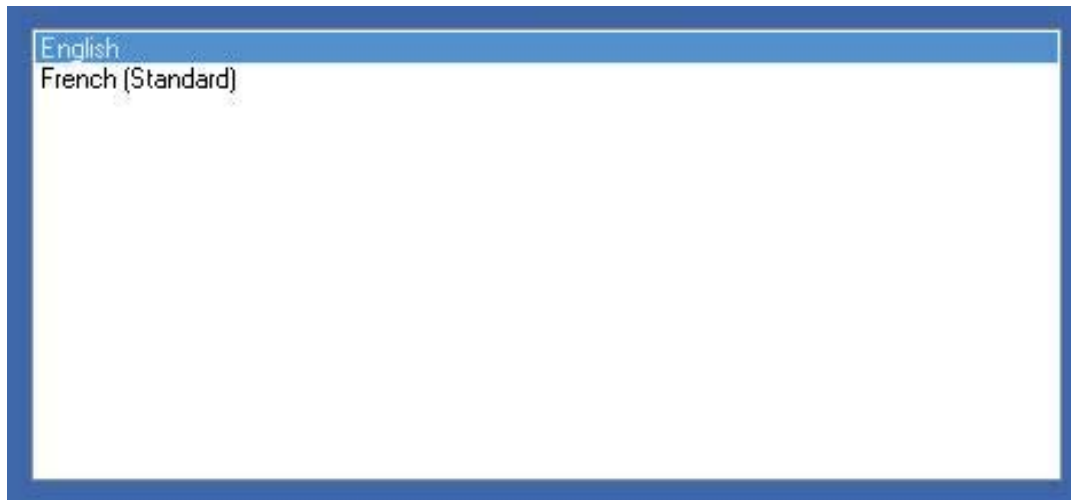
- The Controller cable connecting the camera to the arm is needed to operate the zoom function from the computer keyboard.
- Depending on your computer's power output, one or two USB cables will be required to operate the Graduate. Plug in both cables and verify correct operation. Unplug the USB cable connected to the lower connector of the controller box located on the arm. If your Graduate continues to operate correctly, including zooming of the image, then you only need to use one USB cable. If it does not work correctly you must use both cables.

3. Installing Graduate Setup Software

Requirements: Windows XP or Vista installed on the PC.

Insert the installation CD into the CD-ROM drive and follow the instructions.

If the installation procedure does not begin automatically, use Windows Explorer to find on your CD a file called SmartViewGraduateSetup.exe. Double click this file to launch installation.



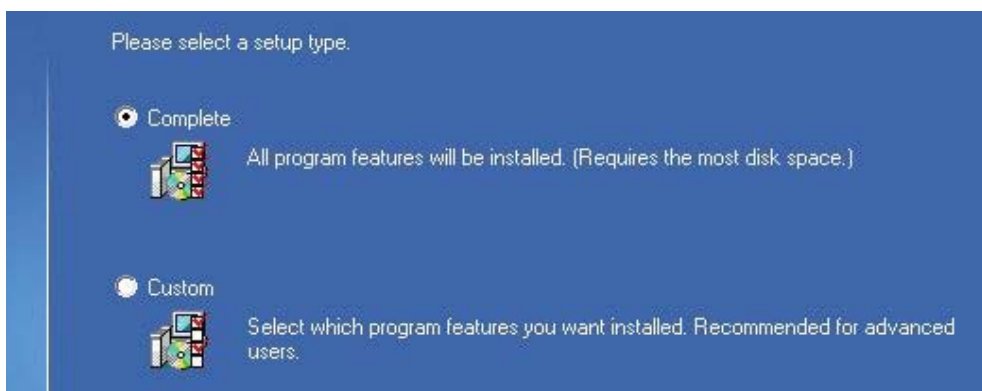
Select installation language.



Click Next to continue.



Read the License agreement and click the option stating that you accept the terms of the license agreement and select Next.

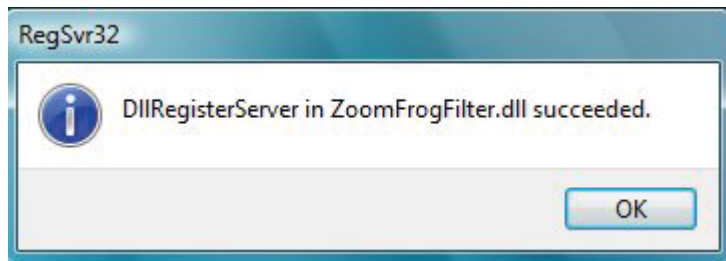


**Click Next to continue installation at the default location.
If you wish to select a different installation location, select Custom and click Change.**

Click Install to begin the installation.

If you want to review or change any of your installation settings, click Back. Click Cancel to exit the wizard.

Press the Install button to begin installation.



A window will inform you that the necessary files have been installed. Press OK.

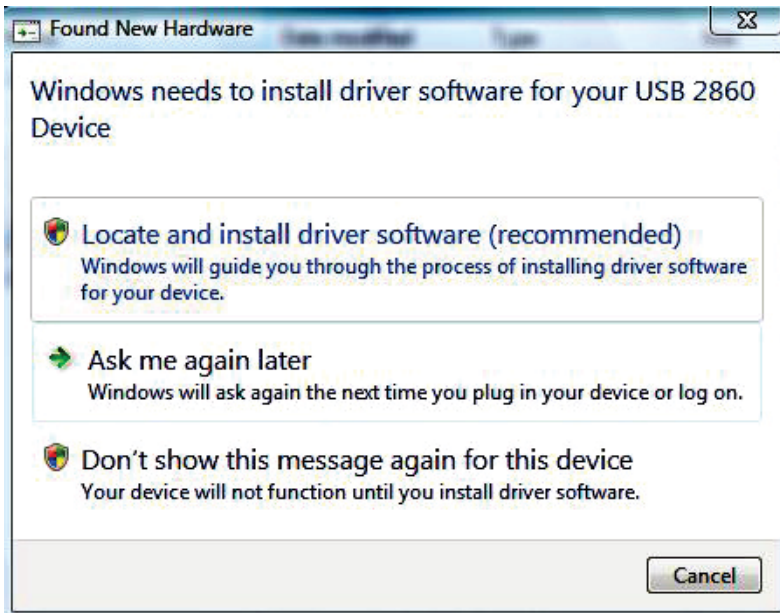
InstallShield Wizard Complete

The InstallShield Wizard has successfully installed SmartView Graduate. Click Finish to exit the wizard.

A window will inform you that the installation was successful. Press Finish to end software installation.

You may now plug in the two USB cables that connect the SmartView to your computer. The computer will now attempt to install the hardware drivers.

If the device drivers have not already been installed, you will have to instruct Windows on how to install these drivers.



Select Locate and install driver software. The computer will locate the driver and install it. This may take a few minutes.



This small pop up window will appear at the bottom of the screen to inform you that the hardware drivers have been successfully installed on your computer. You may now launch your SmartView Graduate by double-clicking the desktop icon.



4. Using the SmartView Graduate

If you intend on using ZoomText, make sure to launch it before starting the SmartView Graduate software.

Adjust the camera angle to capture what you want to see and view it on your computer screen. Position the lens in front of the camera to view material placed on the Base plate.

The following commands can be used to modify or save the resulting image.

Function	Key	Alternate Key
Zoom In / Zoom Out	+ / -	
Rotate Image 90 degrees	R	F6
Brightness adjustment (1)	, or .	
Contrast adjustment (1)	CTRL + , or .	
Toggle color	C	F3
Preset color keys (2)	F9, F10, F11, F12	
Restart / Freeze camera	Space	

Function	Key	Alternate Key
Image stabilization (3)	H	
Open save file dialog	CTRL + S	
Quick image save	SHIFT + S	
Power camera down	SHIFT + ESCAPE	
Split screen (4)	CTRL+SHIFT+ Arrow Keys	
Help	F1	
Software version and Serial number	CTRL+F1	

Notes:

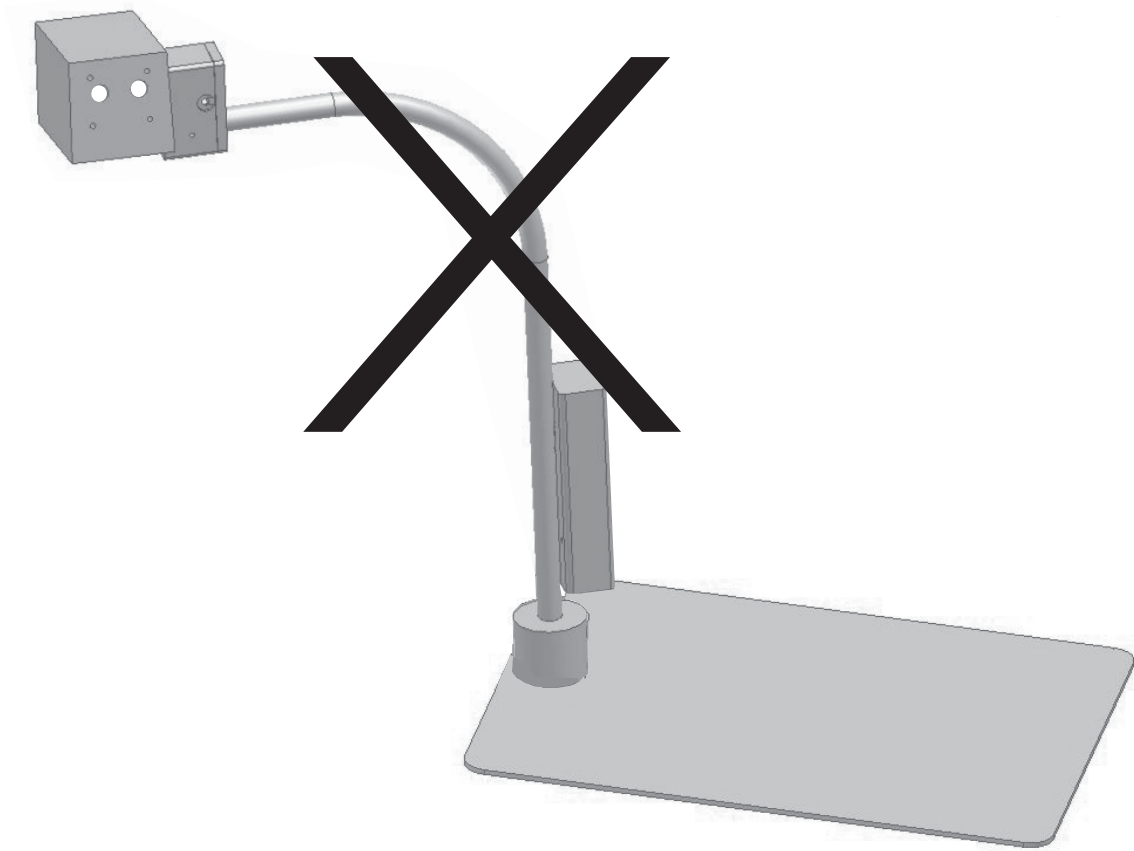
(1) Press , and . simultaneously to return to default color, brightness and contrast settings.

(2) Press F9-F12 keys to change to one of the preset color. Any changes to preset color will be automatically saved.

(3) Use the Image stabilization function to stabilize the image from camera movements.

(4) Only available when working with ZoomText. Select the arrow key that corresponds to the desired side of the screen to place the Graduate window. Repeat the command to return to full screen.

5. Caution: May tip over



Manufacturer Warranty

This device is a high quality product, built and packaged with care. All units and components are guaranteed against any operational defects as follows:

US and Canada: one (1) year

Europe: two (2) years

Australia: one (1) year

Warranty covers parts and labor. If any defect should occur, please contact your local distributor or the manufacturer.

Note: Warranty terms may periodically change, please consult our website for the latest information.

Conditions and Limitations

No replacement or repair covered by the warranty will be carried out unless the unit is accompanied by a copy of the original bill of purchase. Please retain your original. If the unit has to be returned, please use the original packaging. This warranty applies to all cases where the damage is not a result of improper use, mistreatment, negligence or acts of God.

Contact:

**For customer support please contact
the HumanWare Office nearest you.**

**Australia/Asia
+61 2 9686 2600**

**Canada
1 888 723-7273 or +1 450 463 1717**

**UK/Europe
+44 1933 415 800**

**USA
1 800 722-3393 or 925 680-7100**

www.humanware.com

Humanware™